

# Pulled or pushed out? Causes and consequences of youth migration from densely populated areas of rural Kenya

Milu Muyanga, Dennis Otieno & T. S. Jayne

Presentation at the Tegemeo Conference 2017 on *“Transforming Agriculture for Inclusive Growth and sustainable livelihoods”*

December 6, 2017, Nairobi, Kenya





# FEED <sup>THE</sup> FUTURE

The U.S. Government's Global Hunger & Food Security Initiative



**Acknowledgements:** The work highlighted here is jointly funded through the generous support of the American people through the United States Agency for International Development (USAID) under the Food Security Policy Innovation Lab and by the Bill and Melinda Gates Foundation under the Guiding Investments in Sustainable Agricultural Intensification Grant to MSU.



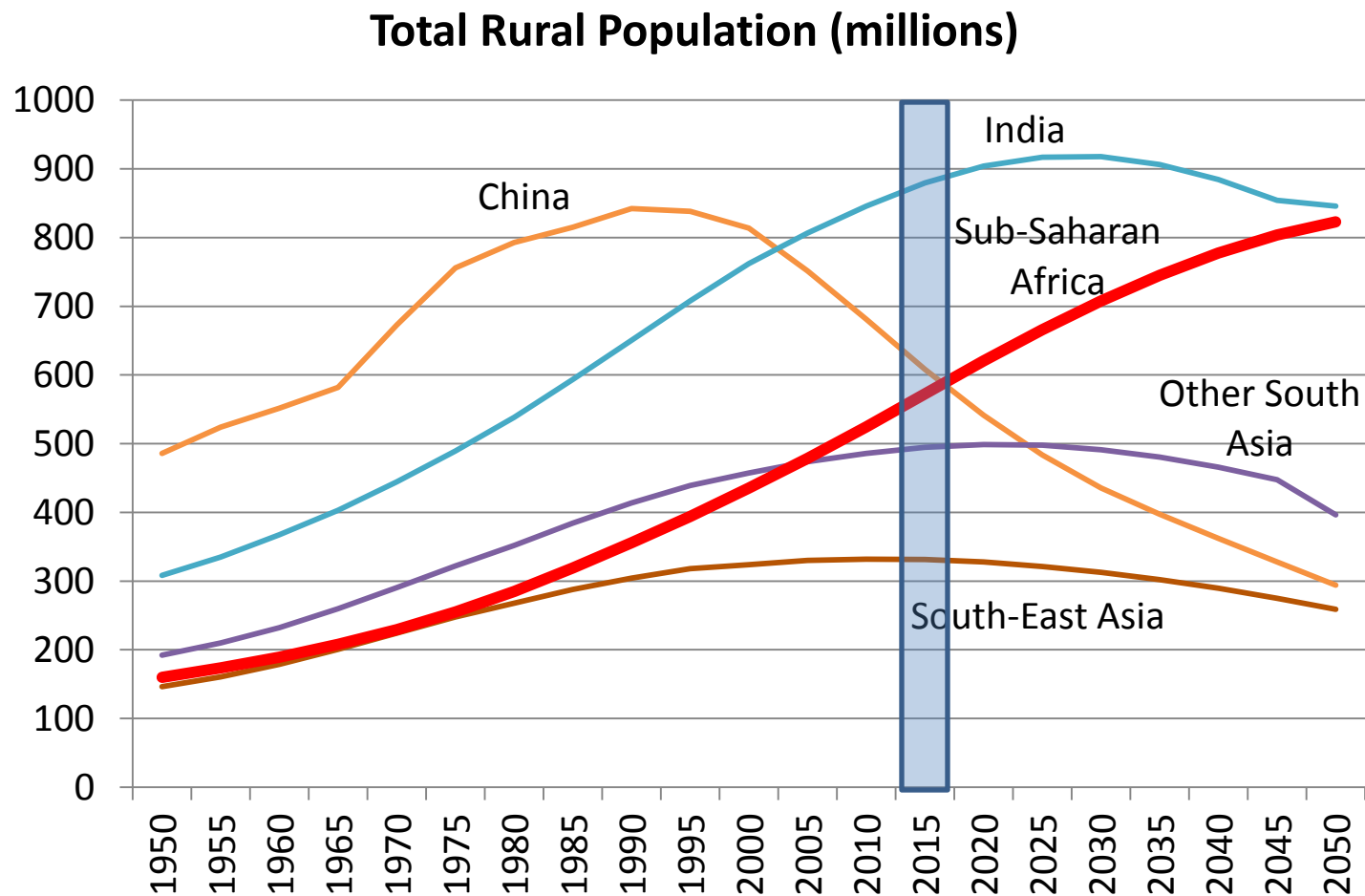
# Africa in the 21<sup>st</sup> Century



*Africa is beyond bemoaning the past for its problems. The task of undoing that past is ours, with the support of those willing to join us in a **continental renewal**. We have a new generation of leaders who know that we must take responsibility for our own destiny, that we will uplift ourselves only by our own efforts in partnership with those who wish us well.*

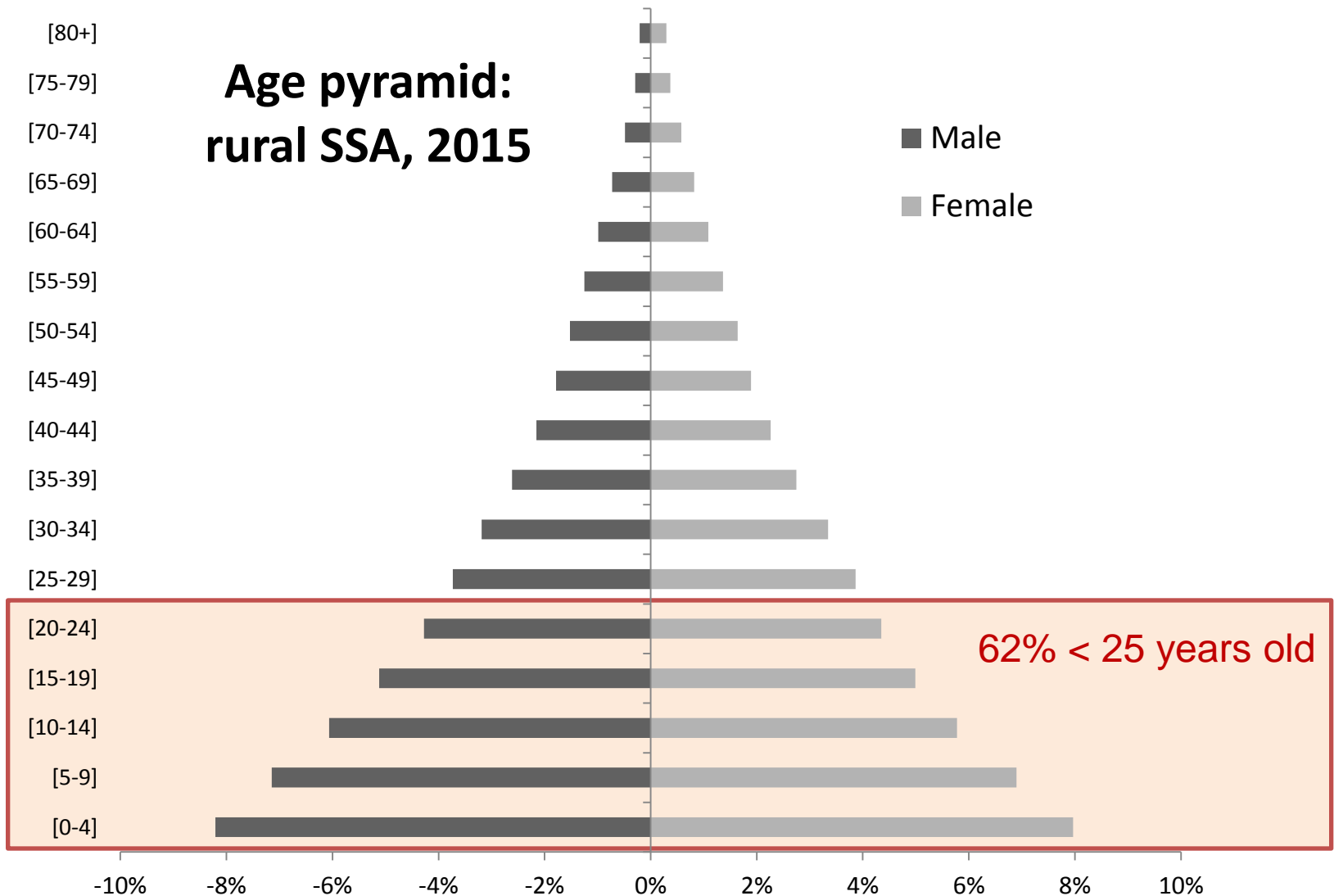
-- Nelson Mandela

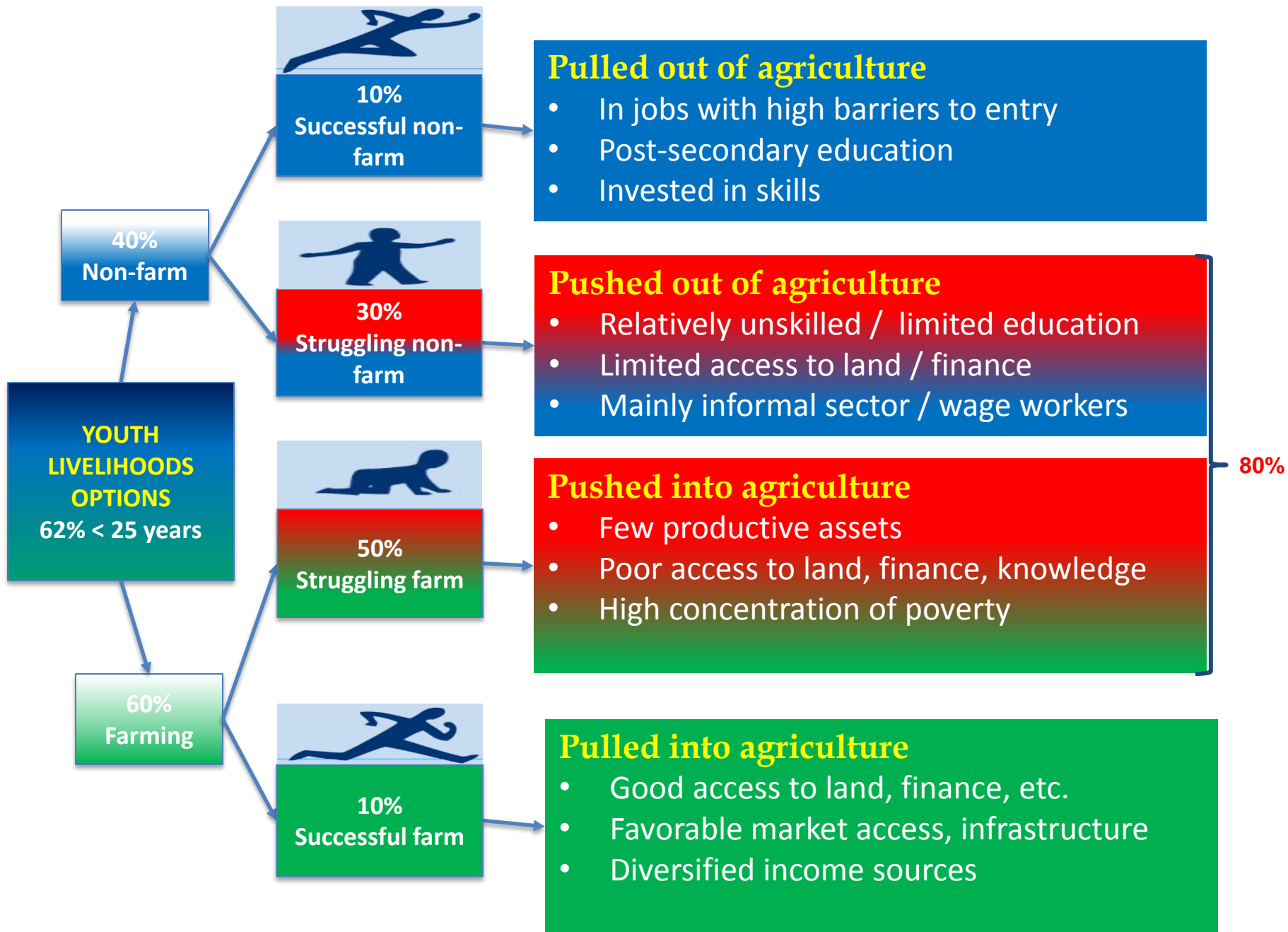
# Sub-Saharan Africa: only region of world where rural population continues to rise past 2050



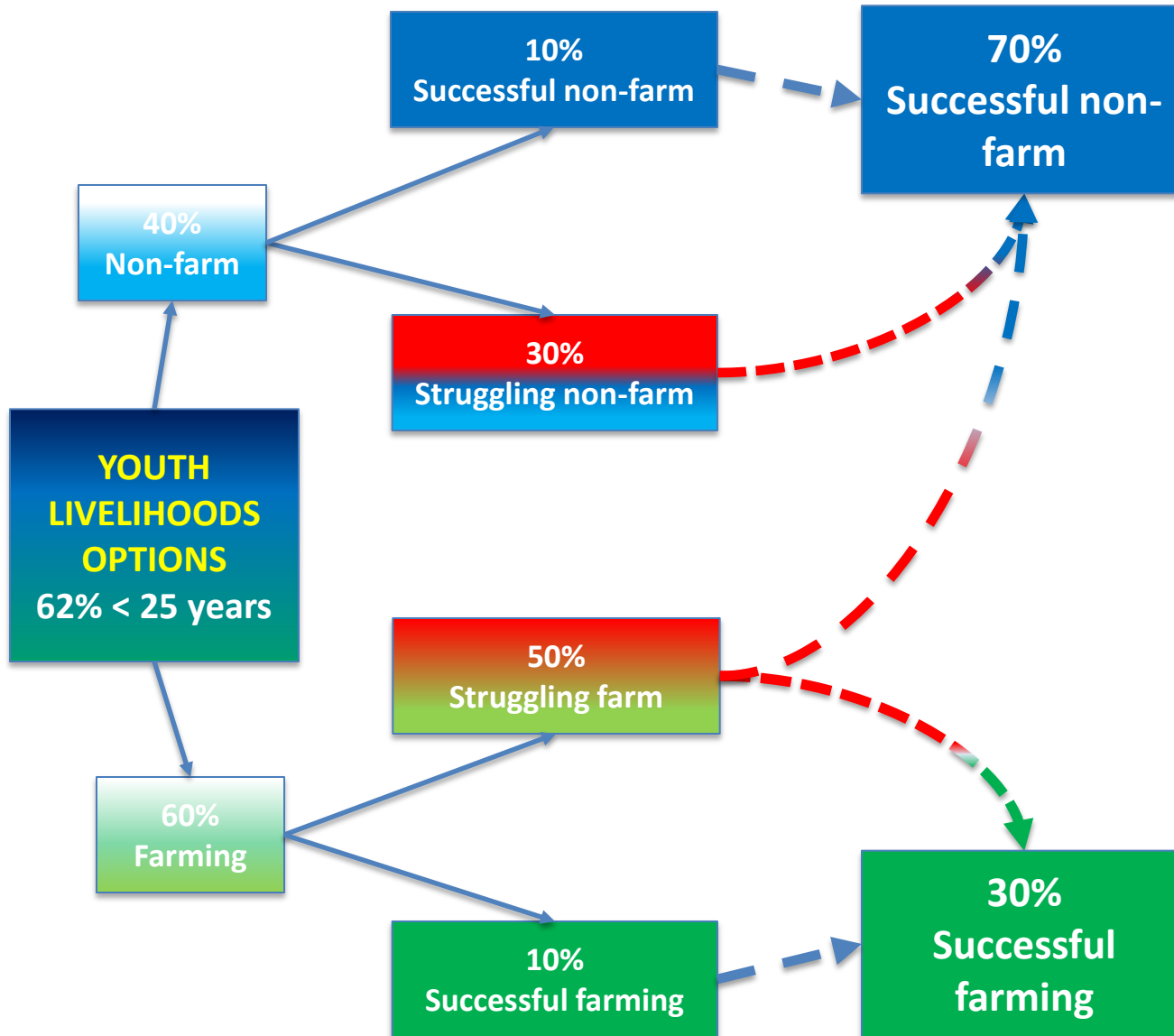
Source: UN 2013

# Looming employment challenge in SSA





# Structural transformation pathway



# Study objectives

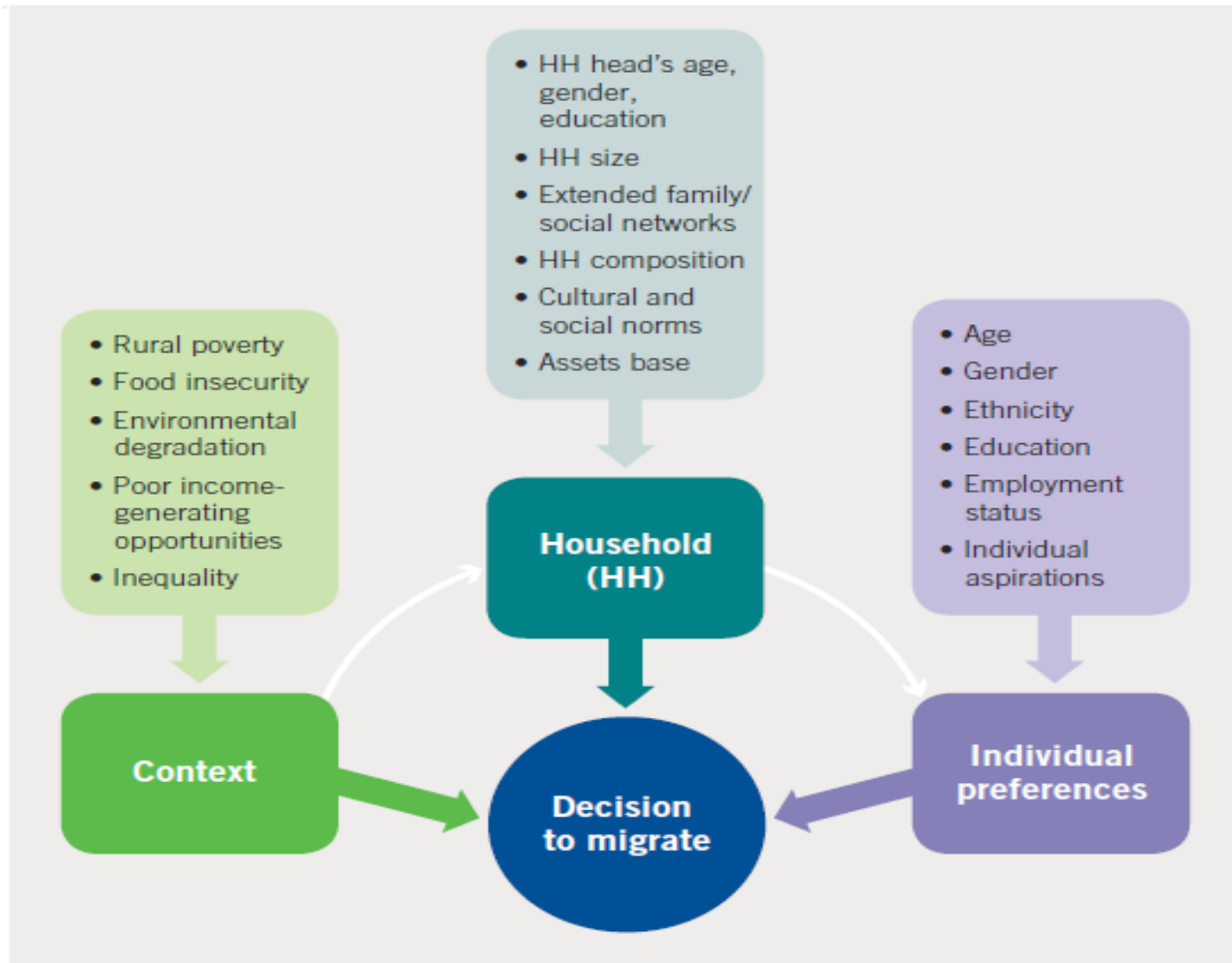
- This study investigates youth access to agricultural land, and how land access influences youth migration (seasonal and permanent) in the densely populated areas of rural Kenya
- Specifically, the study examines factors explaining youth access to land and the extent to which youth access to land in turn influences permanent and seasonal youth migration



## Definition of terms

- **Youth:** Defined as persons aged between 15 and 30 years.
- **Permanent residents:** Youth that stayed in their homes through the panel period
- **Permanent migrants:** Those that migrated permanently
- **Seasonal migrants:** Those that stayed away from the family for a period exceeding one month during the last 12 months

# Conceptual framework: Determinants of youth migration



Source: Deotti and Estruch (2016)

## Data source [I]

- This study uses a six surveys panel data spanning 17-year period (from 1997 to 2014)
  - which makes it possible to detect long-term trends that are likely to influence youth access to land and migration

## Data source [II]

- Identified households about **650 households** residing in locations above the 500 persons per km<sup>2</sup> population density from the panel.
- 767 members were **youth** (aged between 15 and 30 years)
- 63% (489) of them were **permanent residents**
- 27% (205) of them **migrated permanently**
- 10% (73) involved in **seasonal migration**
- About 68 percent of the permanent migrants moved from **rural** to **urban** areas.
- Of the rural to urban migrants, 72 percent migrated to **major cities**

## Table 5b: Reasons for migration and current occupations of the migrants

		Current economic occupation				
		Started business	Informal employment	Formal employment	Job seeking	Permanent migrant sub-sample
<b>Reason why individual migrated to this particular destination</b>	Business opportunity	33.3%	16.7%	41.7%	8.3%	24 [100.0%]
	New job/posting	3.8%	7.7%	88.5%	0.0%	26 [100.0%]
	Land availability	30.2%	49.1%	17.0%	3.8%	53 [100.0%]
	Relatives in the area	15.9%	26.8%	45.1%	12.2%	82 [100.0%]
	Friends in the area	0.0%	40.0%	50.0%	10.0%	205 [100.0%]

**Table 6: Transition matrix of migrants' occupations immediately after migration and current occupation**

		Current main occupation				Permanent migrant sub-sample
		Started business	Informal employment	Formal employment	Job seeking	
<b>Main occupation immediately after migration</b>	Started business	88.0%	0.0%	12.0%	0.0%	24 [100.0%]
	Informal employment	9.8%	82.4%	5.9%	2.0%	26 [100.0%]
	Formal employment	5.6%	5.6%	88.7%	0.0%	53 [100.0%]
	Job seeking	12.1%	27.6%	34.5%	25.9%	82 [100.0%]
Permanent migrant sub-sample		18.5%	30.2%	43.4%	7.8%	205 [100.0%]

## Table 8a: OLS regression results on determinants of youth land access

	Increase
<b>Member attributes</b>	
Gender (1=male)	0.066
Education attainment (years)	0.010
<b>Family history</b>	
Land owned by father to initial head before subdivision (ha)	0.114
Number of sisters to household head	0.054
Initial landholding by head (ha)	0.073
Land inherited by initial household head from his father	0.028
<i>Main occupation by household head (base=agriculture)</i>	
_salaried employment	0.054
_business	0.126

## Table 8b: OLS regression results on determinants of youth land access

	Decrease
<b>Member attributes</b>	
Age (years)	-0.011
Household and household head attributes	
Marital status (base: monogamous)	
_polygamous	-0.153
_divorce/widow/separate	-0.101
Household members aged 15-55 years	-0.020
<b>Family history</b>	
Household migrated into the current settlement (1=yes)	-0.102
Father to initial household head alive (1=yes)	-0.237
Number of brothers to household head	-0.059
<i>Main source of family land (base: inherited)</i>	
_landless	-0.240
Community level variables	
Population density ('00 persons/km <sup>2</sup> )	-0.088
Net primary production (NPP) '000	-0.013



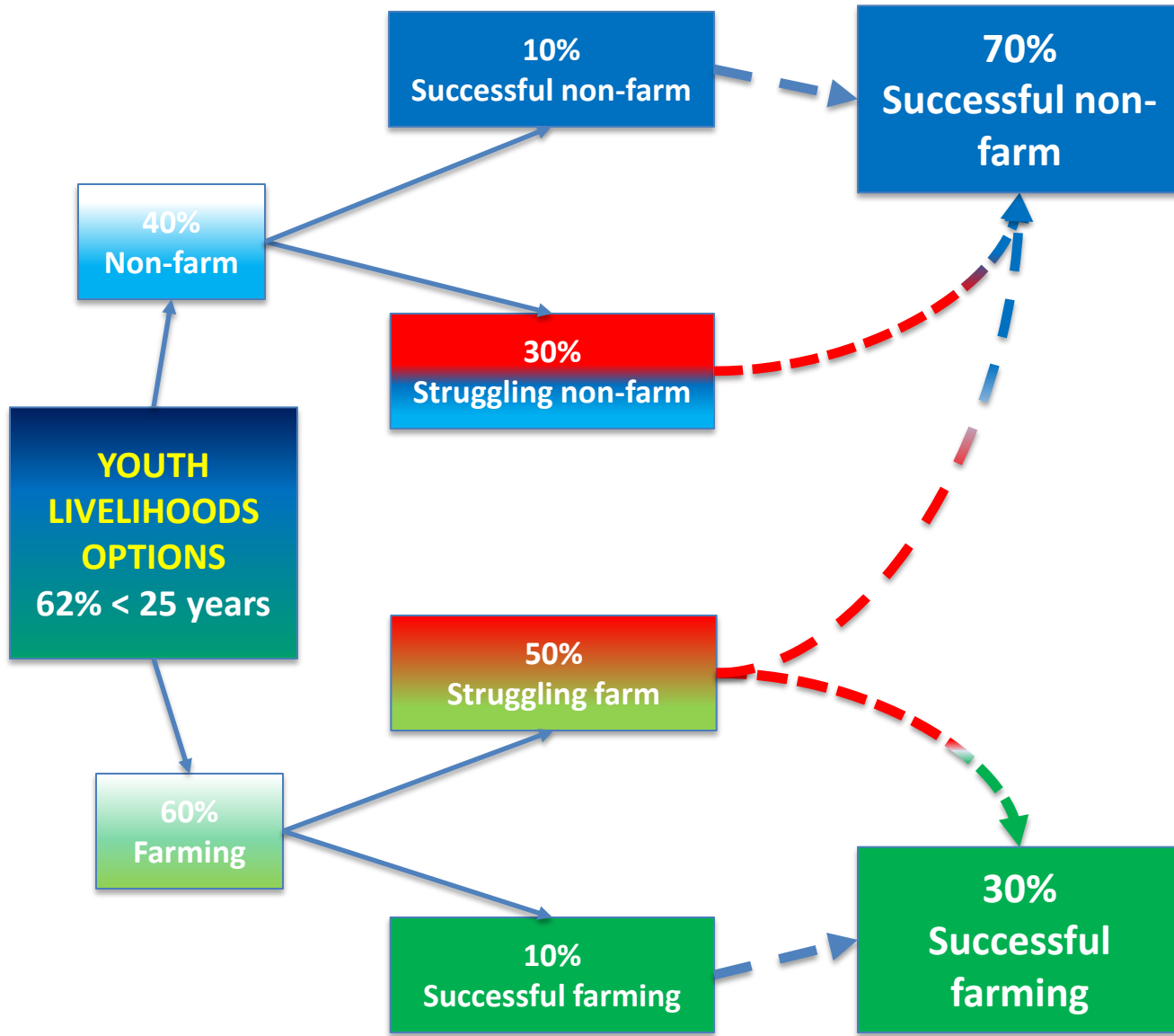
## Table 9: Second stage probit regression results of determinants of permanent youth migration

	Coef.	P>z
<b>Member attributes</b>		
Land access (owned or controlled) (ha)	-0.086	0.00
Age (years)	0.041	0.00
Gender (1=male)	0.122	0.00
Education attainment (years)	-0.007	0.00
<b>Household and household head attributes</b>		
Household members aged 15-55 years	0.049	0.05
Gender of hh head (1=male)	-0.053	0.02
Physical assets and livestock ('million KSh)	0.216	0.00
<b>Community level variables</b>		
Value of farm production 'million KSh/ha planted	-0.090	0.01
Population density ('000 persons/km <sup>2</sup> )	0.214	0.02
Net primary production (NPP) '000	0.080	0.01
Village wage rate ('00 KSh/day)	-0.075	0.00
Village land rent ('000 KSh/ha)	0.019	0.00

Table 10: Second stage probit regression results of determinants of seasonal youth migration

	Coef.	P>z
<b>Member attributes</b>		
Age (years)	0.009	0.00
Gender (1=male)	-0.043	0.00
Education attainment (years)	-0.003	0.01
<b>Household and household head attributes</b>		
<b>Community level variables</b>		
Distance to nearest motorable road ('0 km)	0.036	0.08
Value of farm production 'million KSh/ha planted	-0.064	0.00
Population density ('000 persons/km <sup>2</sup> )	-0.277	0.00
Net primary production (NPP) '000	-0.131	0.00
Slope degrees	0.093	0.00
Village wage rate ('00 KSh/day)	-0.162	0.00
Village land rent ('000 KSh/ha)	0.040	0.00

# Policy implications



**BLUE Policies**

A 3D white figure stands next to a large red question mark, symbolizing uncertainty or a question.

**GREEN Policies**

A 3D white figure stands next to a large red question mark, symbolizing uncertainty or a question.

# What should government do?

- Central plank of a comprehensive youth employment strategy: interventions to raise **agricultural productivity growth**
  - Create new opportunities in farming
  - Multiplier effects: performance of farming will influence the pace of growth in non-farm jobs
- Agricultural sector policies must **anticipate** and **respond** to:
  - Resources needed for youth to succeed in farming (e.g. access to land, finance, etc.)
  - Distinguish between “**trying to keep youth in agriculture**” vs. “**giving youth viable choices**”

# Strategic policies include [GREEN PATH]

- Invest in R&D and institutional capacity building to generate new knowledge
- Develop robust and effective extension systems to facilitate access to productivity enhancing technologies
- Improve coverage and quality of physical infrastructure (energy, road, communication, etc.)
- Develop youth-centered programs to make farming profitable for young people
- Facilitate access to productivity enhancing inputs (e.g. fertilizer), market, and resources (e.g. land, finance, labor-saving technologies)
- Promote mentoring by successful farmers (youth mentors)

## Strategic policies include [BLUE PATH]

- Invest in **education** and **skill** development to upgrade skills of the labor force
  - Prepare youth to “**spot**” and take advantage of new job opportunities
  - Regular update of **educational curriculum** and approaches
  - Invest in **actionable research** to address the data gaps on labor market issues and impact evaluation, what works well and how?
- Strengthen **youth voice** on decisions concerning them

We cannot always build the future for our youth,  
but we can build our youth for the future

– Franklin D. Roosevelt –

Thank You

