

MARKET PARTICIPATION AND HOUSEHOLD INCOMES

TEGEMEO INSTITUTE, EGERTON UNIVERSITY

*Presented at the Workshop on “Status, Trends and Opportunities in Smallholder
Agricultural Productivity and Market Participation for Improved Food Security and
Incomes” Othaya Social Hall, Othaya, 27th July, 2011*





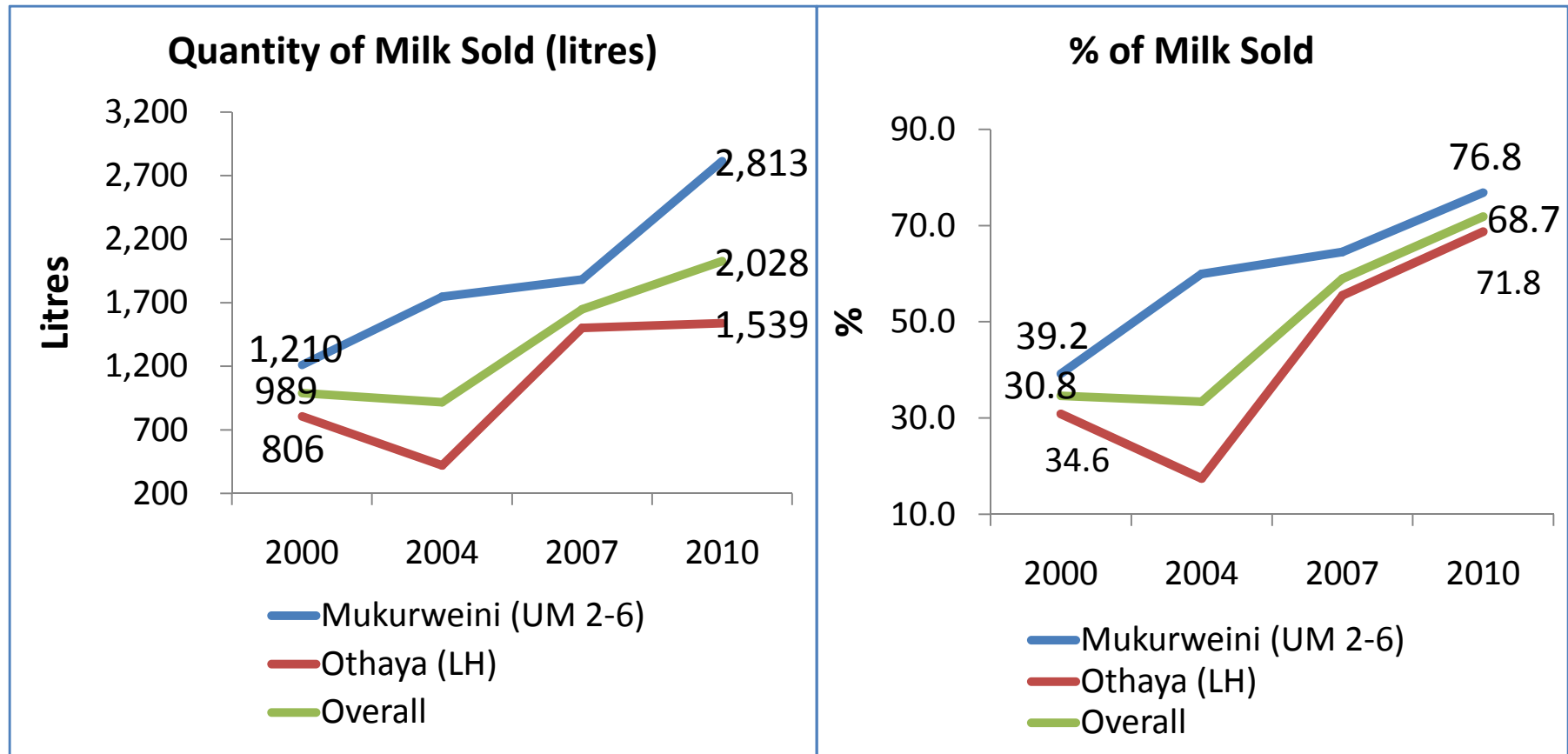
MARKET PARTICIPATION

Outline

- % of households selling selected commodities
- Quantity marketed of selected commodities
- % of production marketed for selected commodities

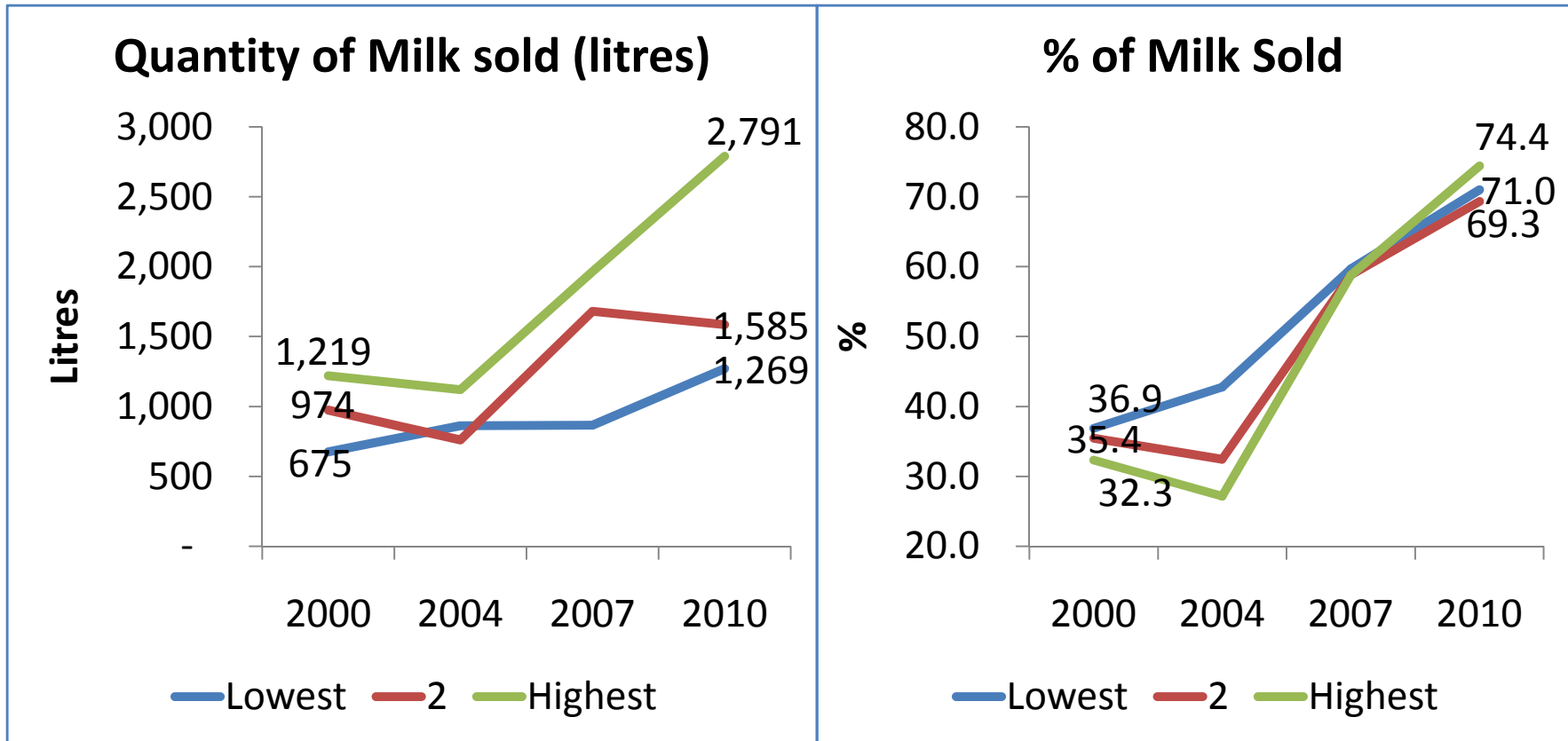
Dairy (milk)

Household Annual Milk Sales – by region



- Quantity sold of milk increased in both regions; increase greater in Mukuruweini
- Quantity sold higher in Mukuruweini than Othaya
- % of milk marketed more than doubled between 2000 & 2010; from 31% to 69%
- Mukuruweini had higher proportion of production marketed – 77% in 2010

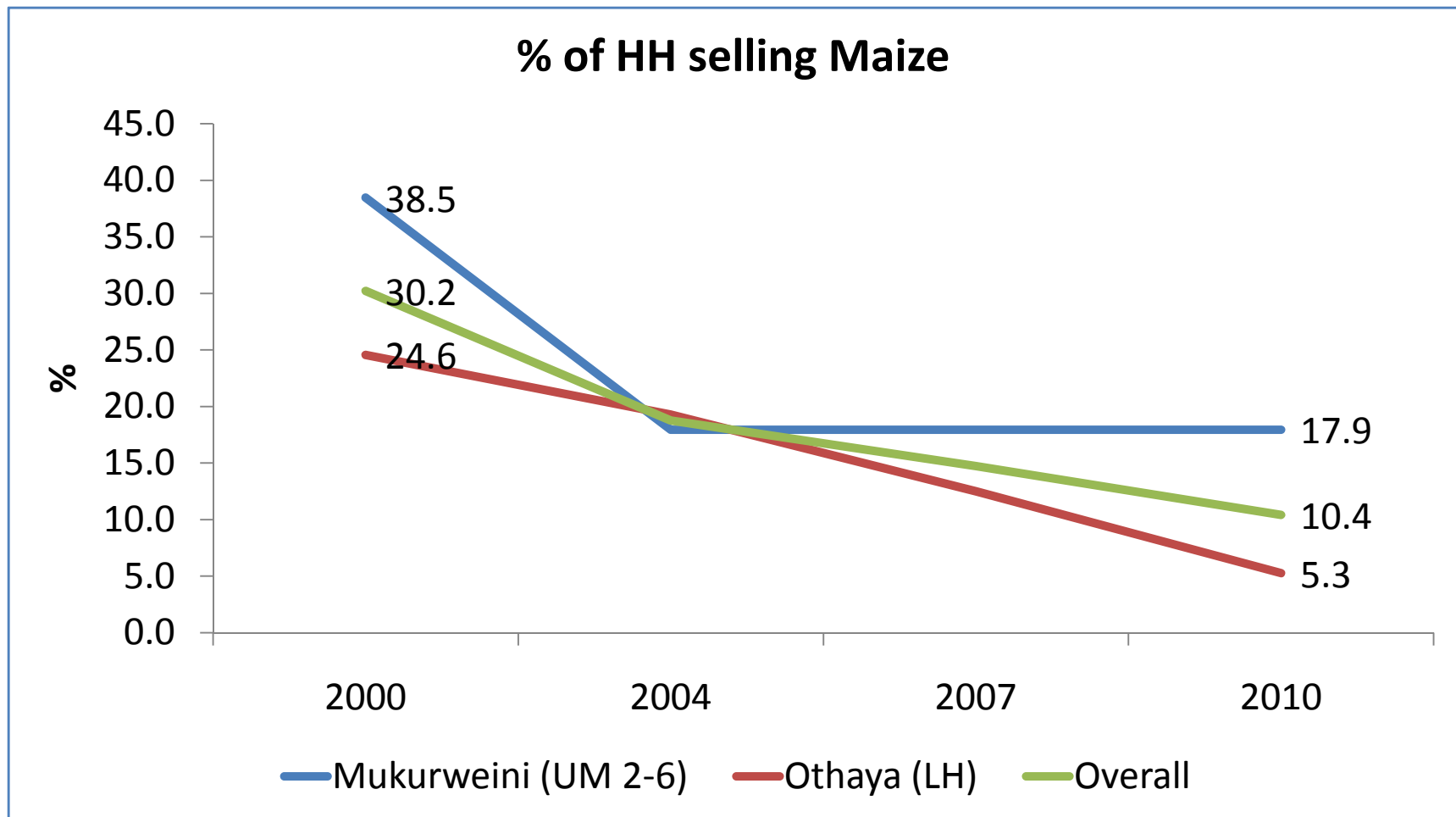
Household Annual Milk Sales – by income group



- Quantity of milk sold increase for all groups; remained highest for highest income group
- % of milk marketed more than doubled for all the groups between 2000 & 2010; gap between highest and lowest income group smaller compared to the gap in sales quantities

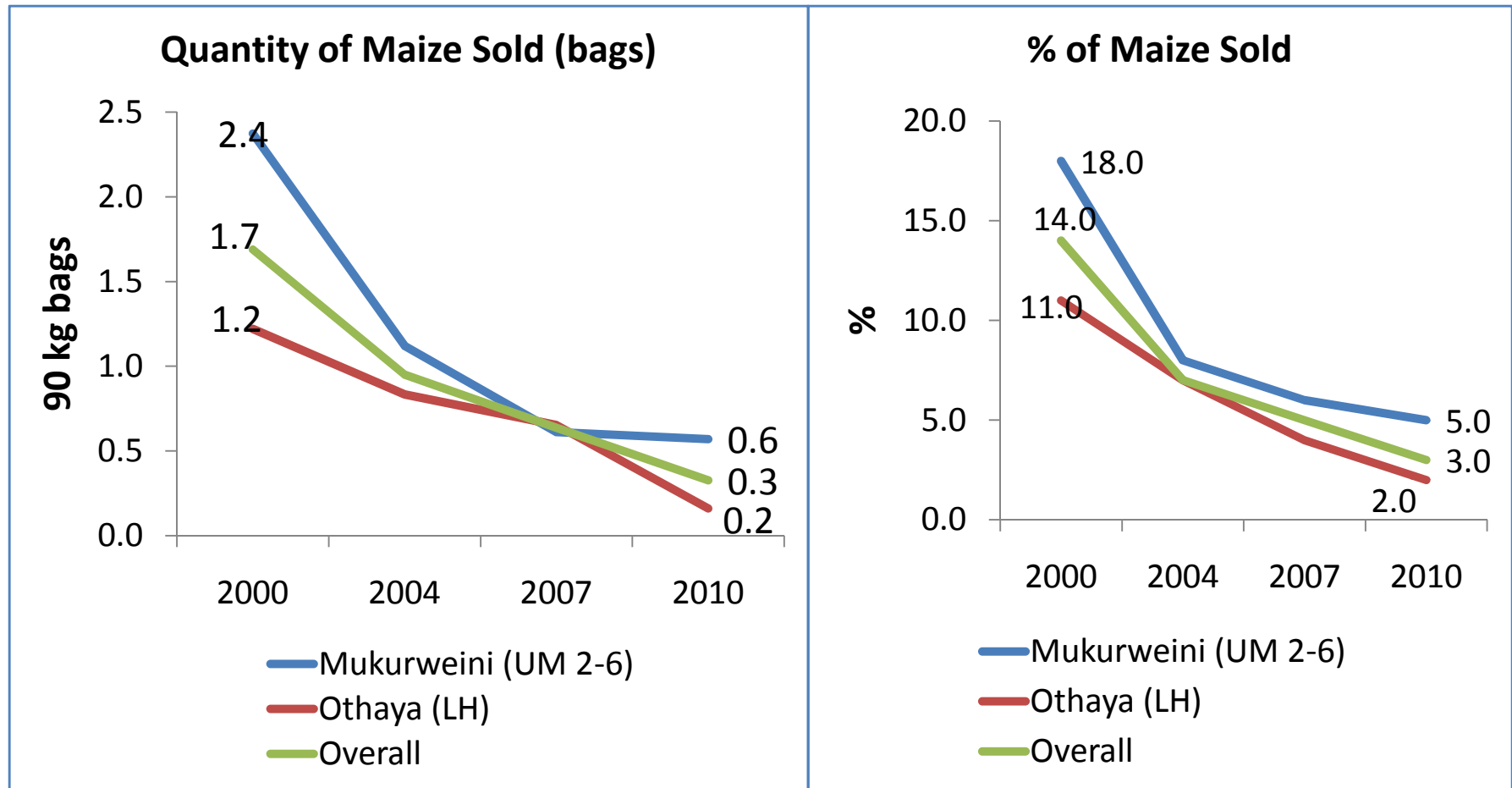
Maize

Household Annual Maize Sales



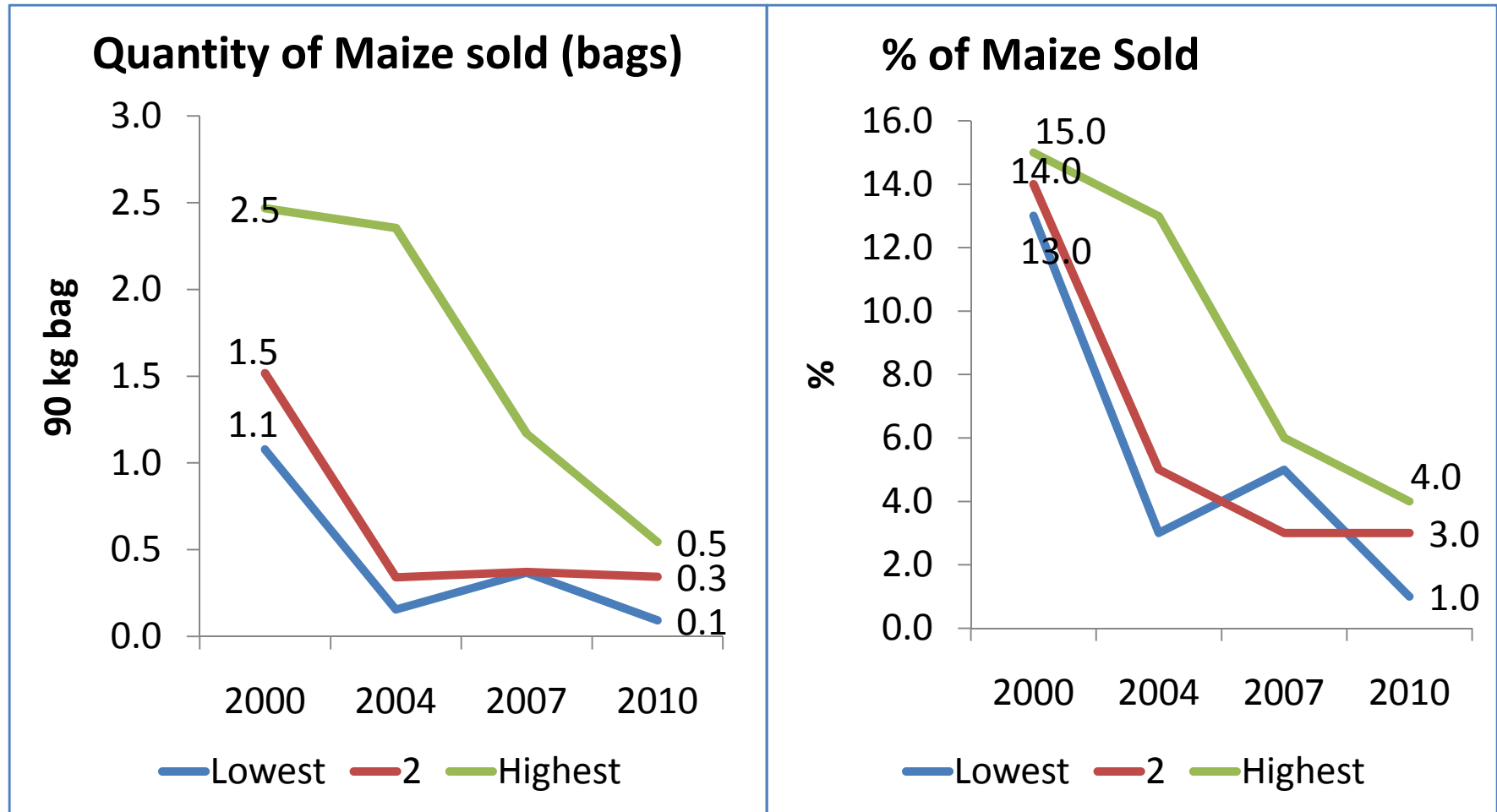
- Decline by over half in the proportion of households selling maize
- Proportion selling maize higher in Mukuruweini than Othaya

Household Annual Maize Sales – by region



- Both quantity and proportion of marketed production declined
- Maize production is increasingly becoming subsistence in the region

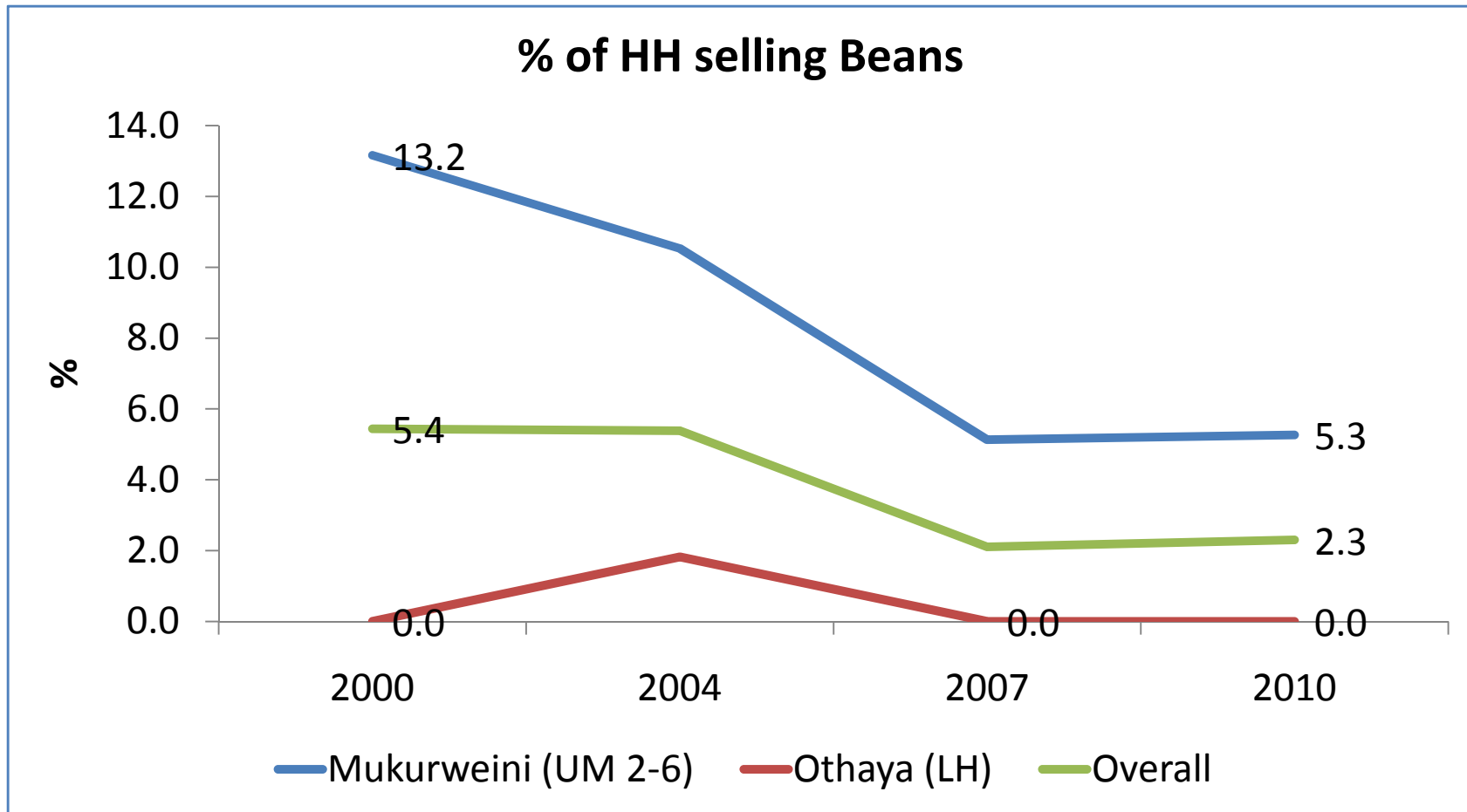
Household Annual Maize Sales – by income group



- Both quantity and proportion of marketed production declined for all groups; but remained highest for highest income group

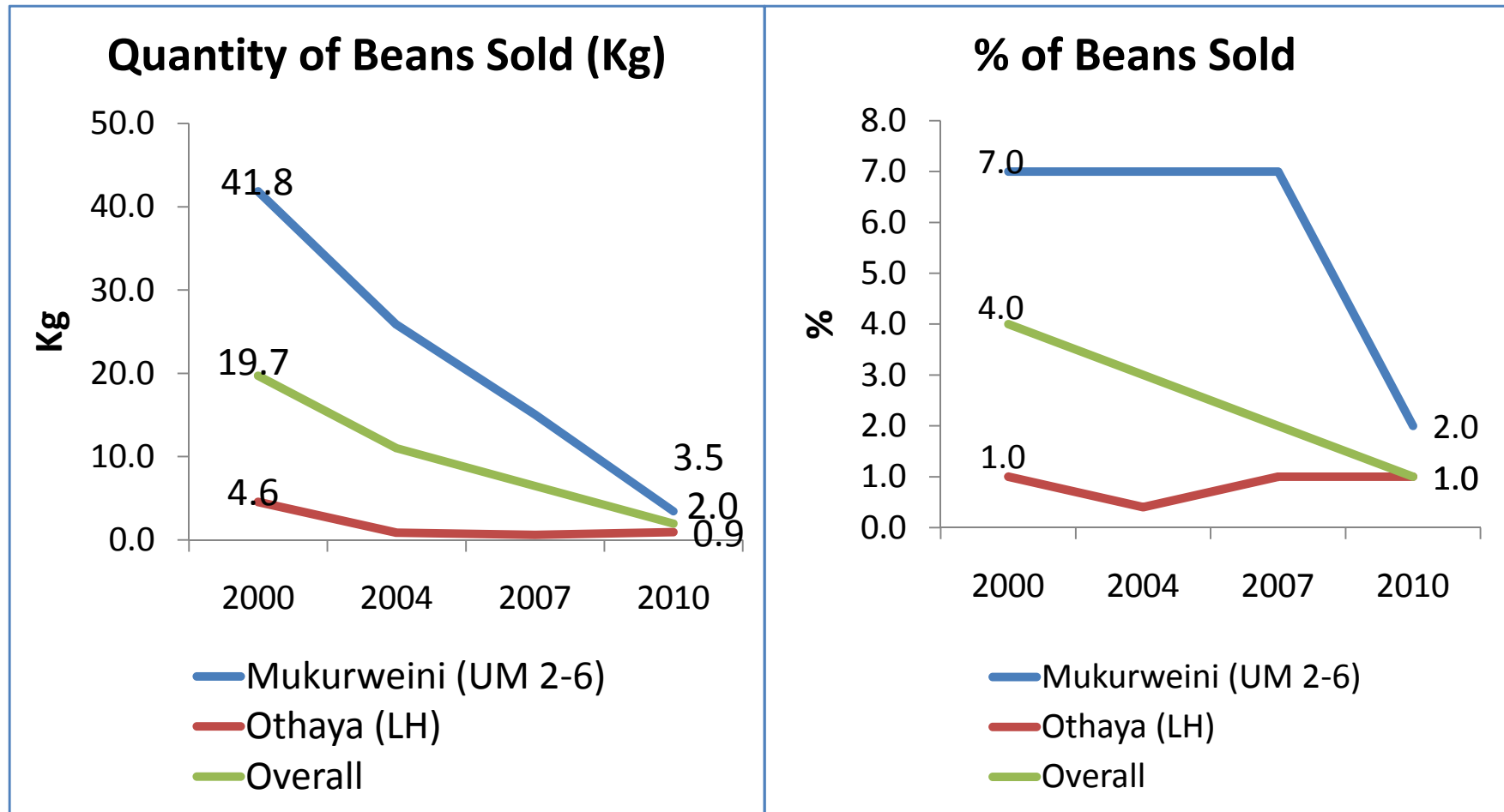
Beans

Household Annual Beans Sales



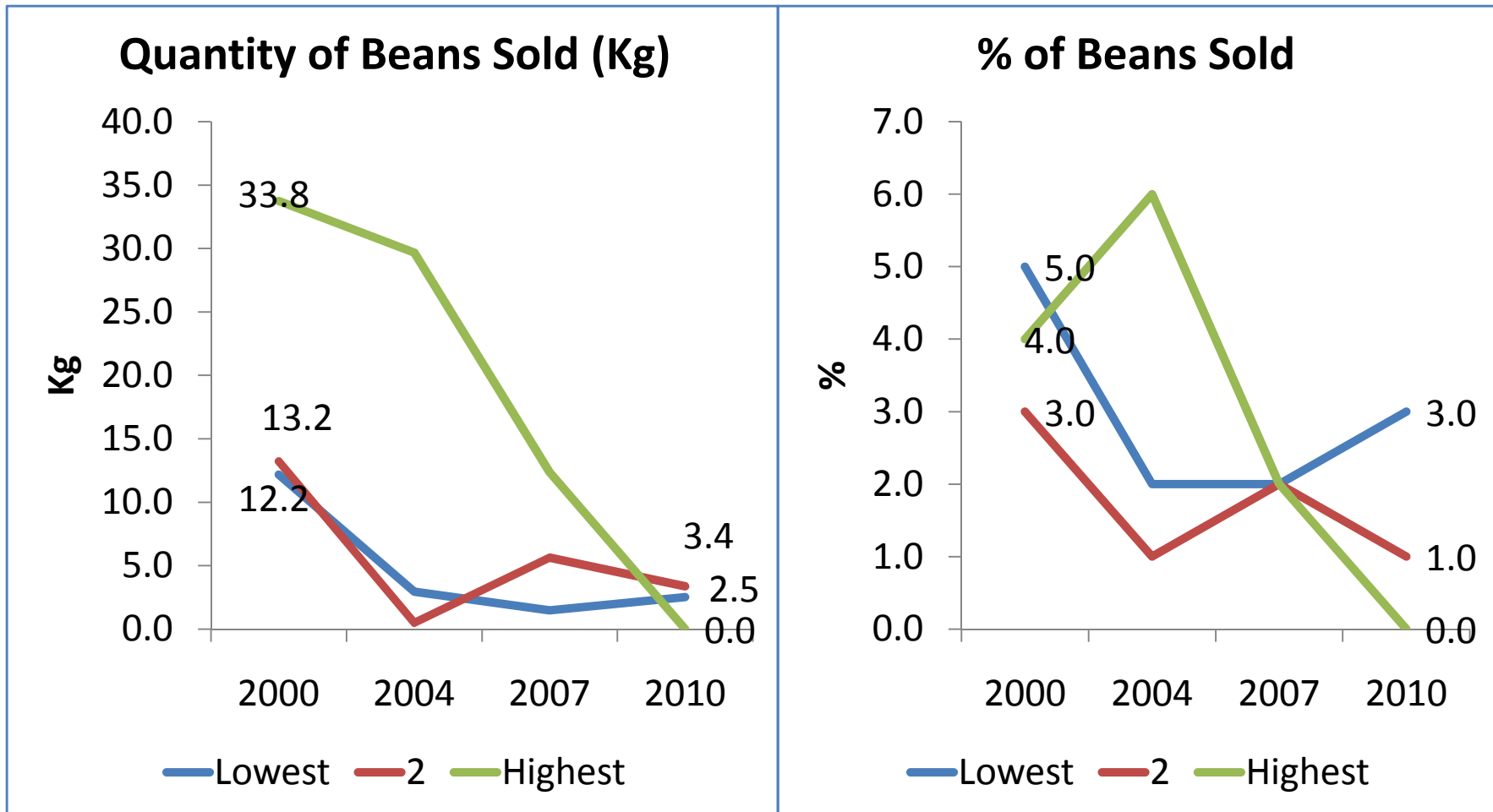
- Decline by over half in the proportion of households selling beans
- Proportion selling beans higher in Mukuruweini than Othaya; few households in Othaya sold beans

Household Annual Sales of Beans – by region



- Both quantity and proportion of marketed production declined in both regions
- Beans production also increasingly becoming subsistence

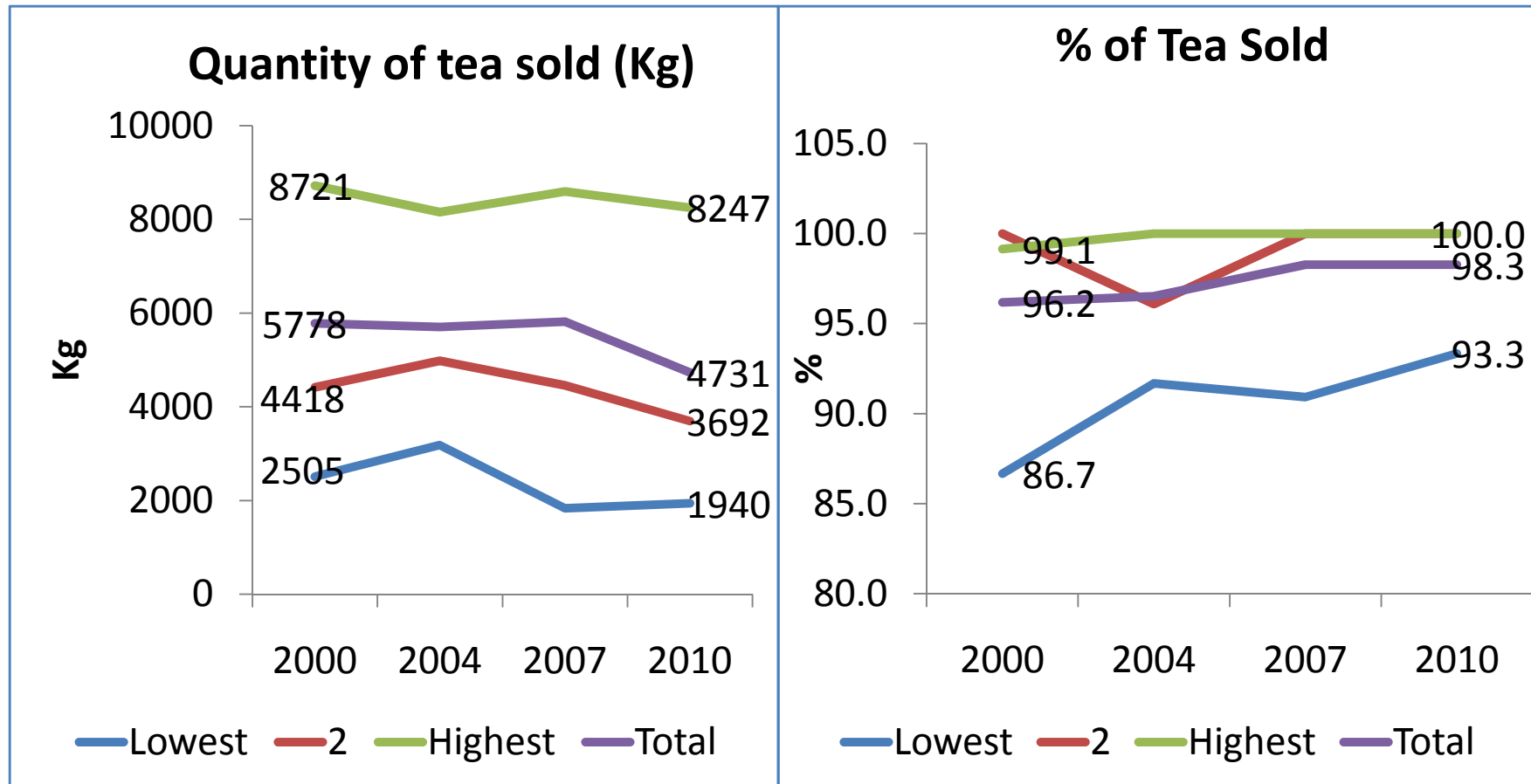
Household Annual Sales of Beans – by income group



- Both quantity and proportion declined for all groups; decline greater for highest income group
- In 2010, lowest income group had highest proportion marketed, but only 3%

Tea

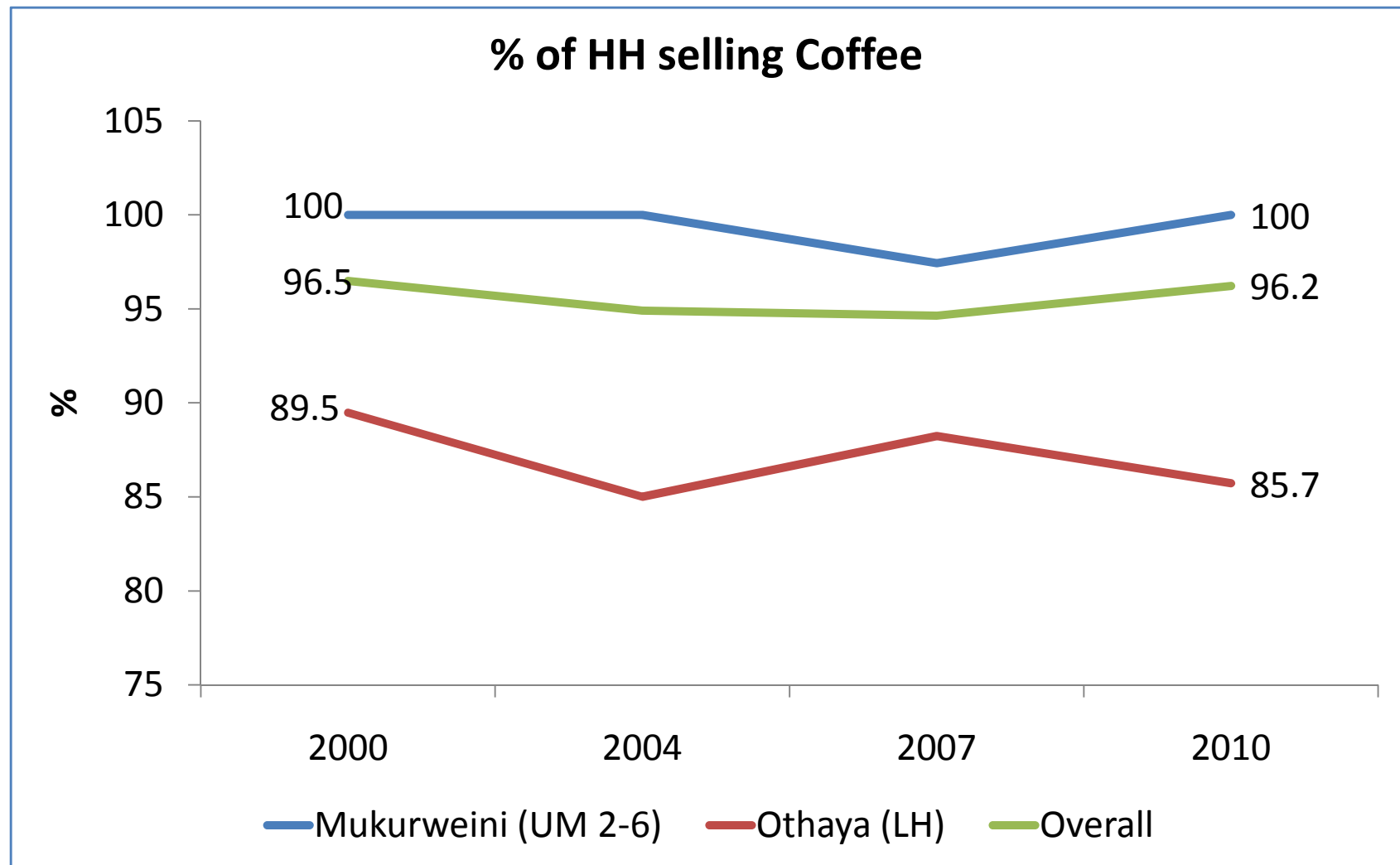
Household Annual Sales of Tea – by income group



- All households that produced tea sold the commodity
- Lowest income group sold lowest quantities and lowest proportions
- Nearly all the tea produced is sold

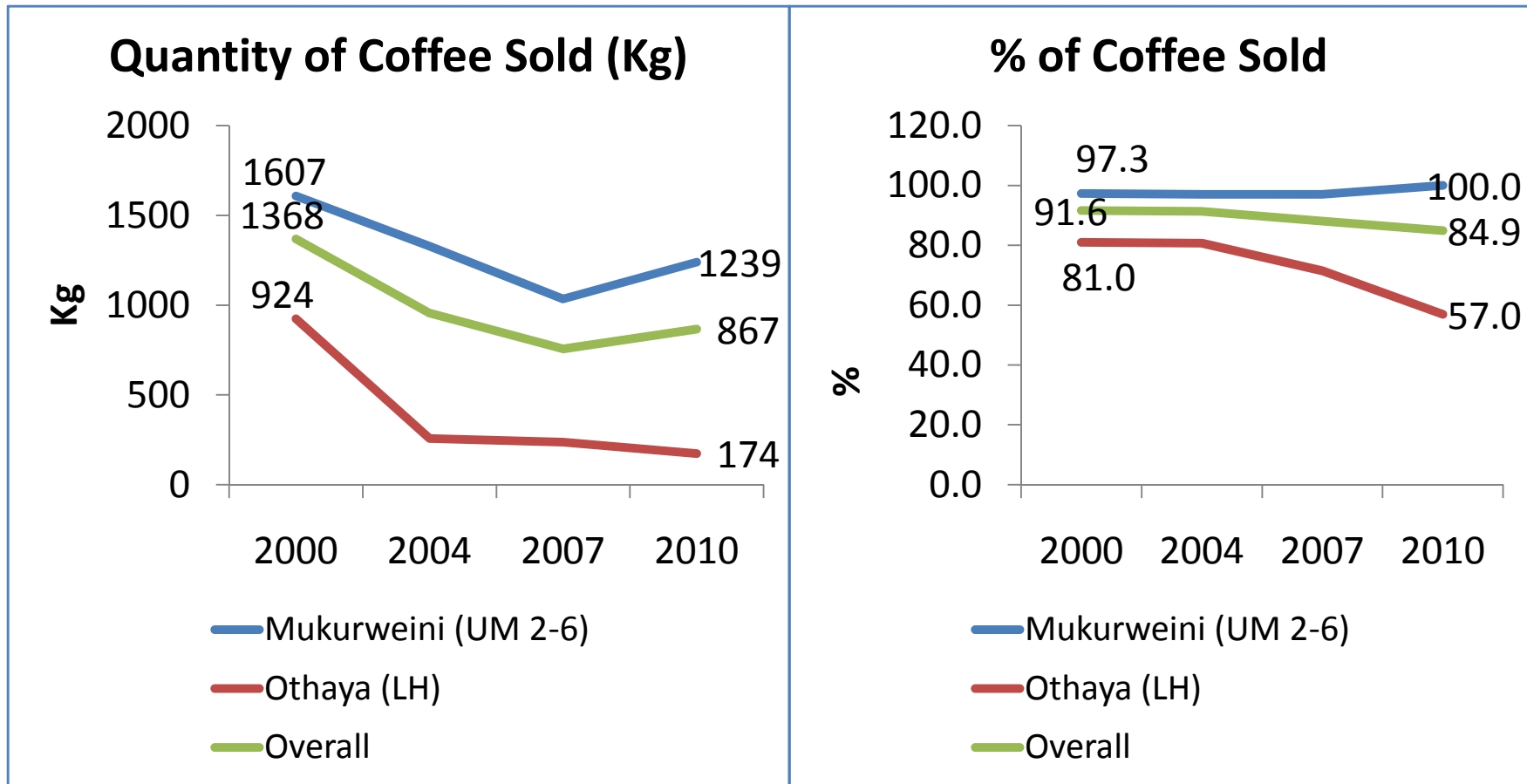
Coffee

Household Annual Sales of Coffee



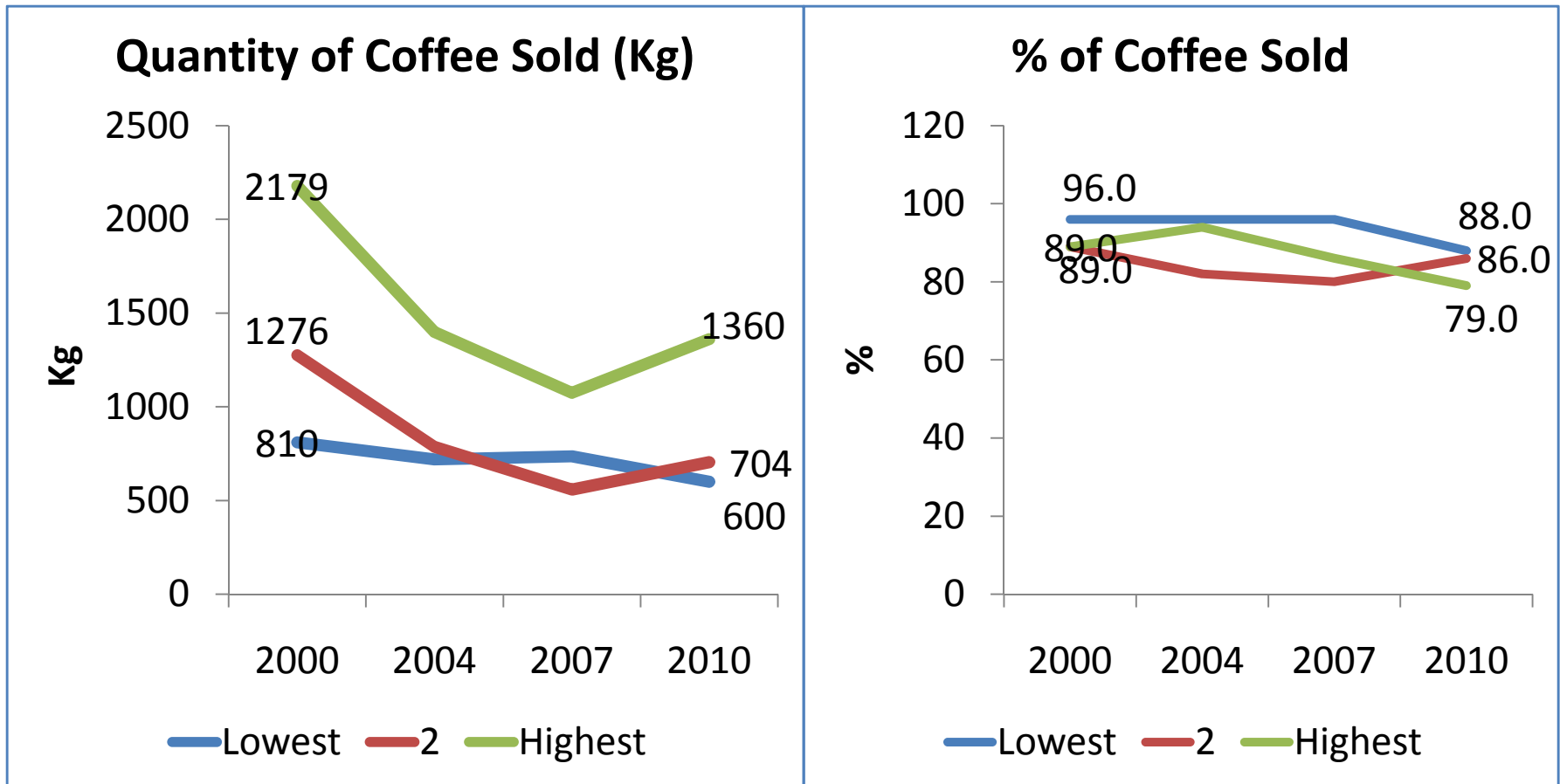
- Overall % of hh selling coffee constant overtime; slight decline observed for Othaya

Household Annual Sales of Coffee – by region



- Quantity marketed declined in both regions, but remained higher in Mukurweini
- % of production marketed higher in Mukuruweini ; 100% in 2010
- Significant decline in % marketed in Othaya; 57% in 2010

Household Annual Sales of Coffee – by income group



- Quantity marketed declined for all groups, but remained highest of highest income group
- % of production marketed highest for the lowest and 2nd income groups

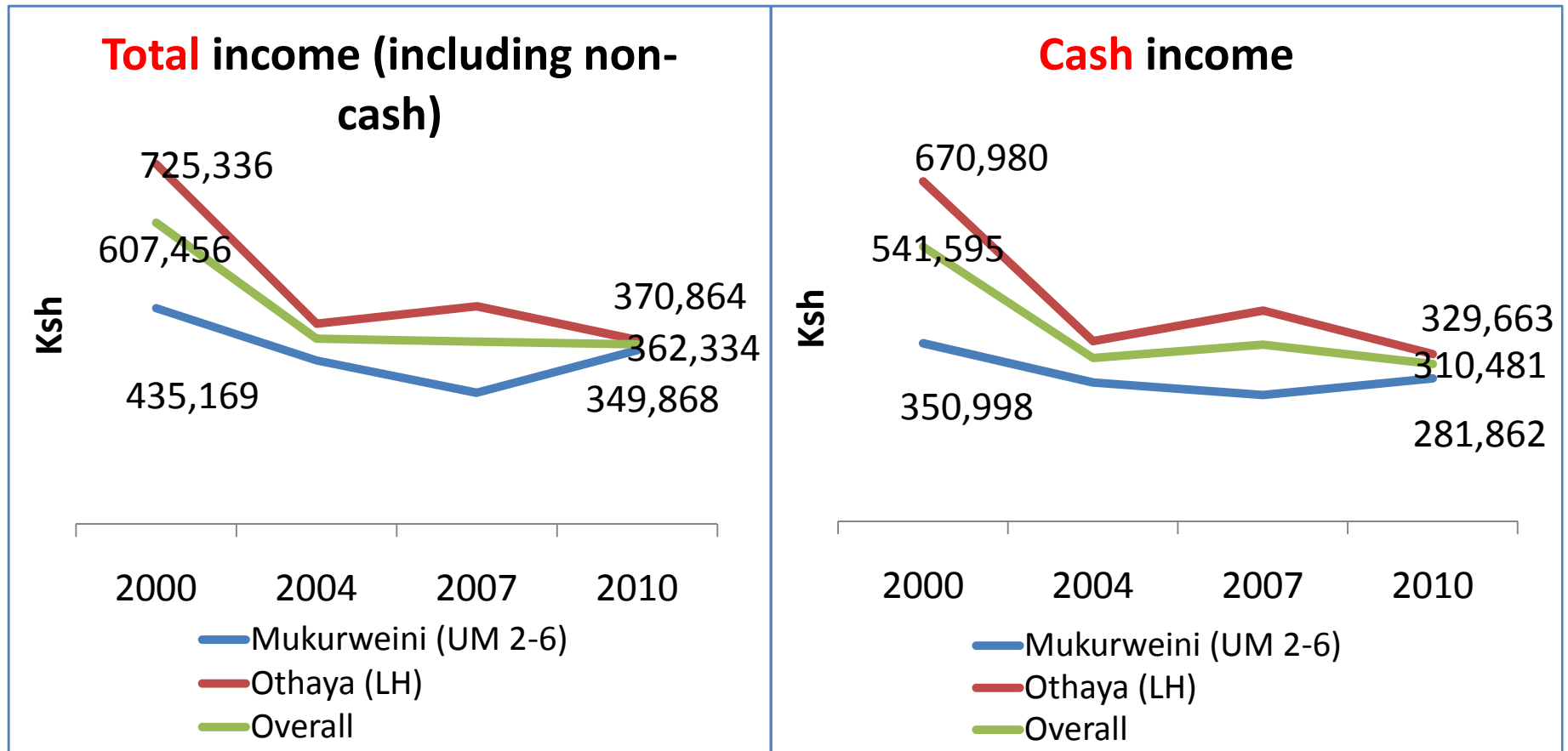


HOUSEHOLD INCOMES

Outline

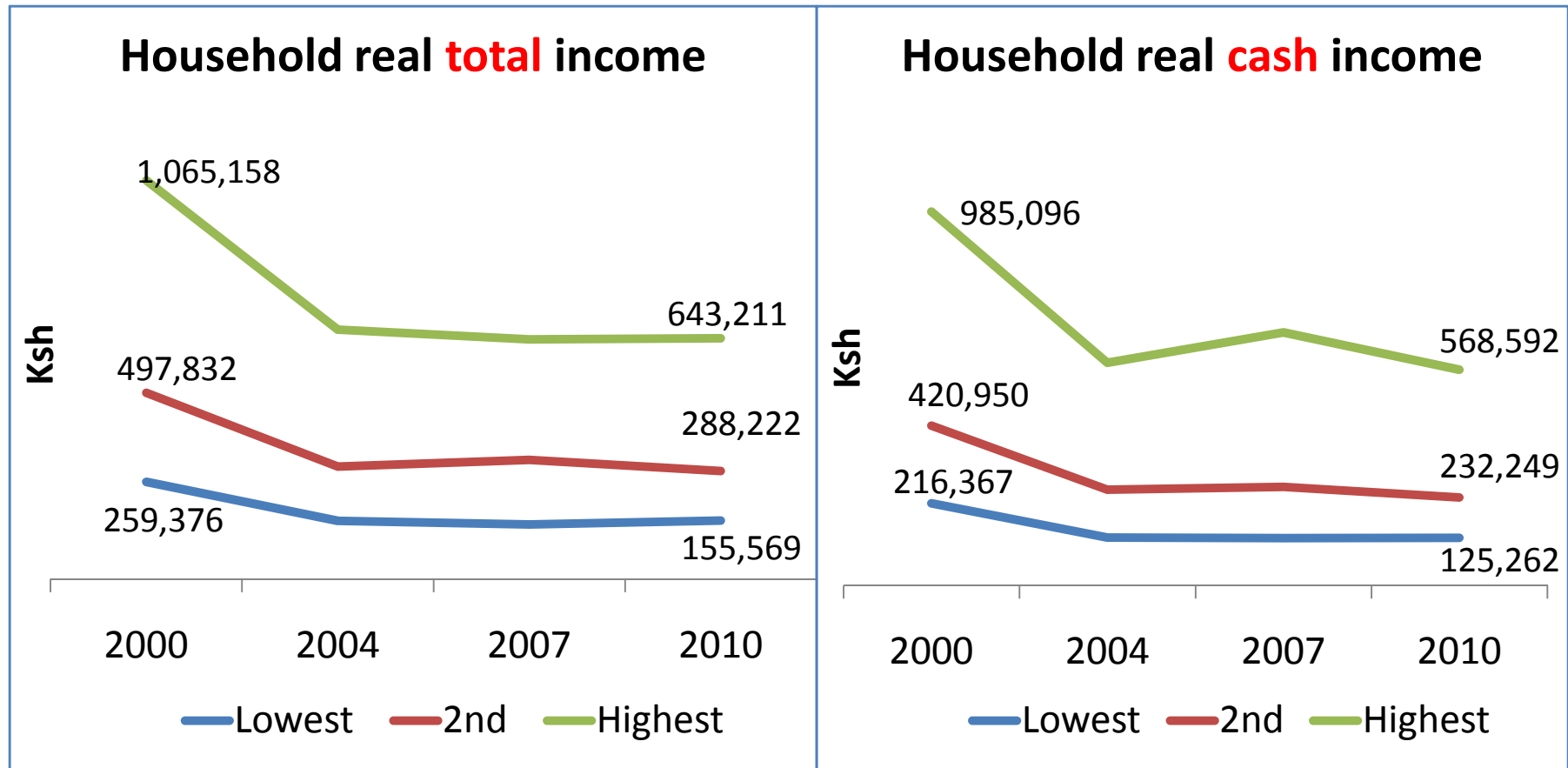
- Total income (including non-cash)
- Cash income
- Income composition (shares of income sources in total income)

Household Real Annual Income – by region



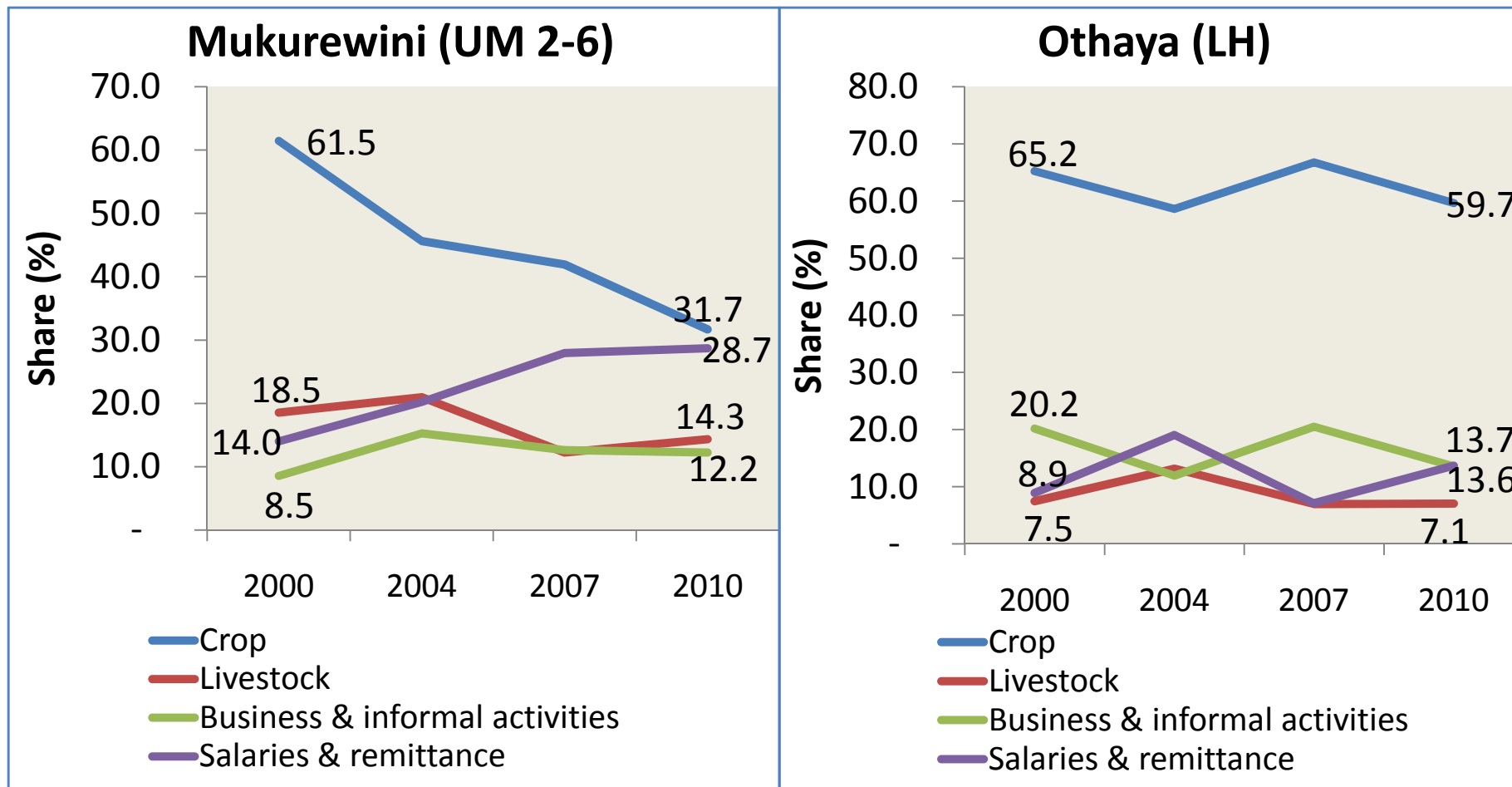
- Household real total and cash income declined in both regions
- Mukurweini had lower income, but experienced increase btwn 2007 & 2010, nearly closing the gap between it and Othaya
- Cash income lower than total income

Household Real Annual Income – by income group



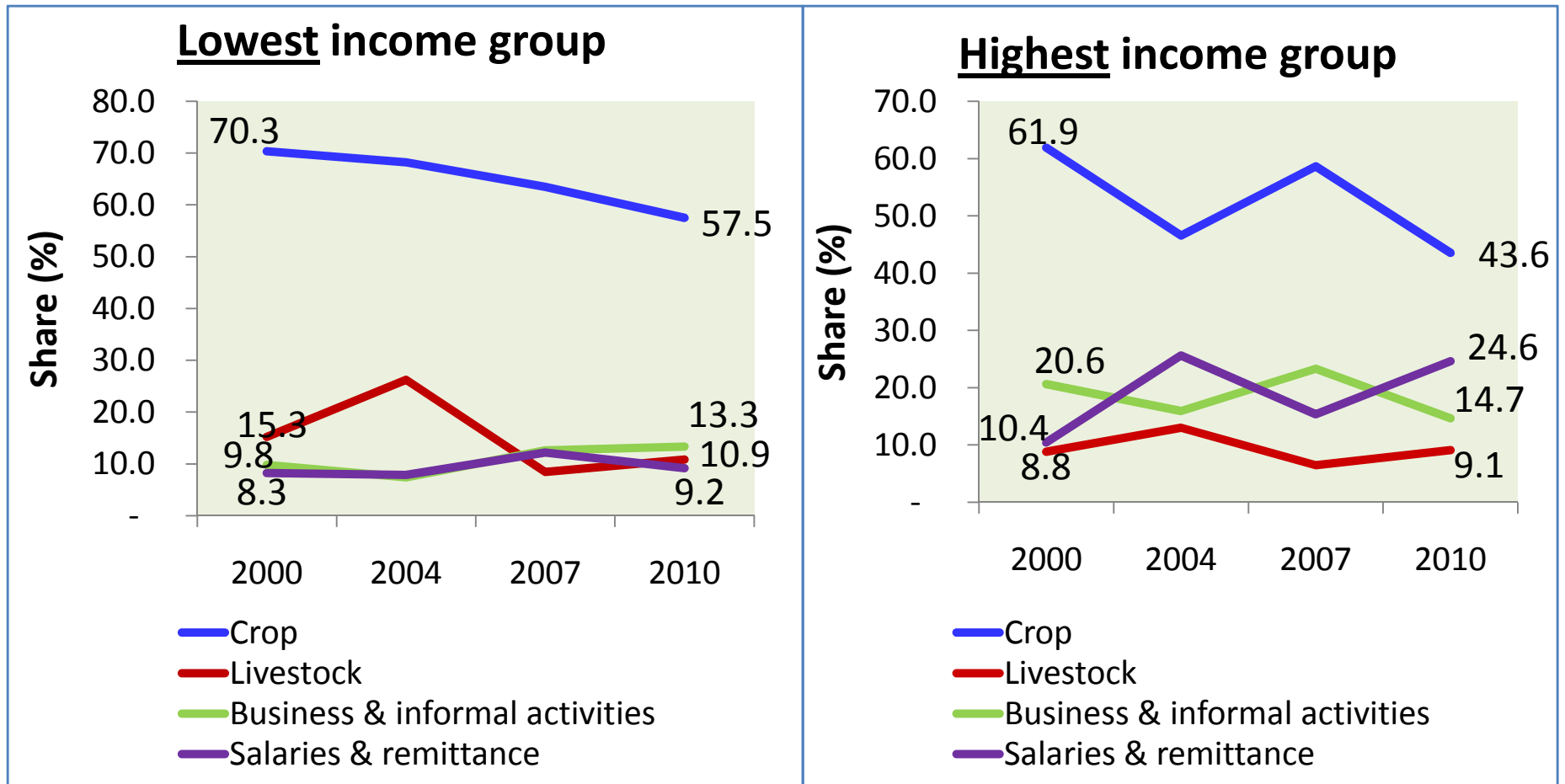
- Household real total and cash income declined for all groups of households
- Households in the lowest income group had nearly four times less income than those in the highest income group
- Income gap between highest and 2nd income group larger than the gap between lowest and 2nd income group – **income inequality high**

Share (%) of Income Components – by region



- **Mukurweini:** Share of crop declined significantly but it still dominates. Share of salaries and remittance more than doubled, nearly reaching a third in 2010.
- **Othaya:** Share of crop declined, but it dominates (two-thirds in 2010). Business, salaries and remittance accounted for 27% in 2010

Share (%) of Income Components – by income group



- **Lowest:** Share of crop declined significantly but it still dominates (about 58% in 2010). Business activities and livestock come second and third, respectively
- **Highest:** Share of crop declined, but it dominates (44% inn 2010). Salaries & remittance and business activities second and third respectively



INFRASTRUCTURE & SERVICES

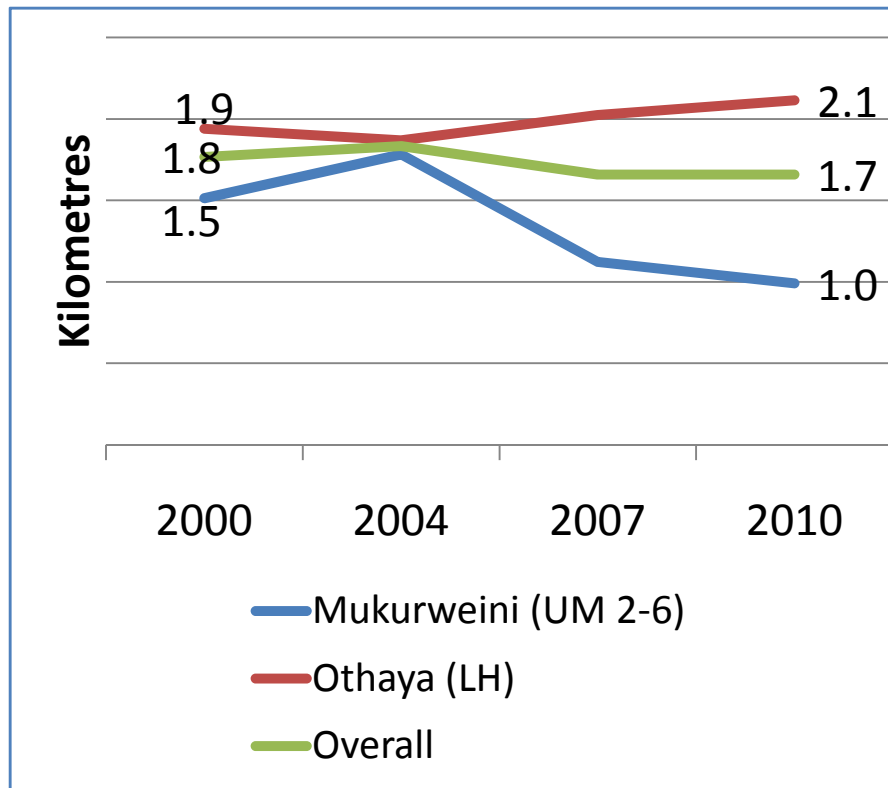


INFRASTRUCTURE & SERVICES

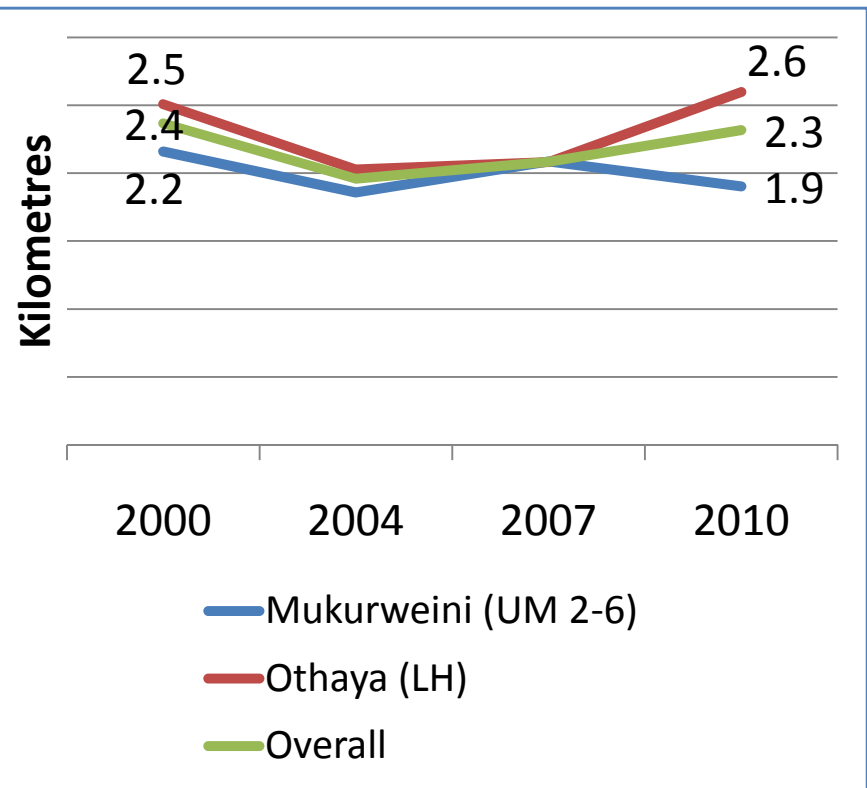
Outline

- Distance to fertilizer and maize seed seller
- Distance to veterinary and extension services
- Distance to motorable and tarmac road
- Distance to piped water and electricity
- Proportion of households with piped water
- Proportion of households with electricity

Distance to Nearest Fertilizer seller

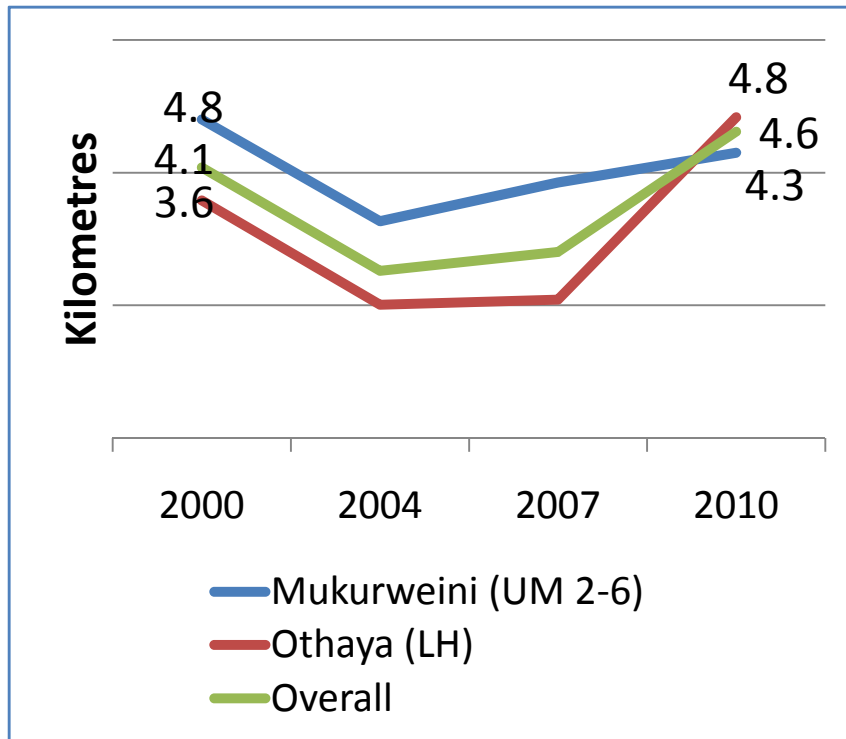


Distance to Nearest Maize Certified Seed Seller

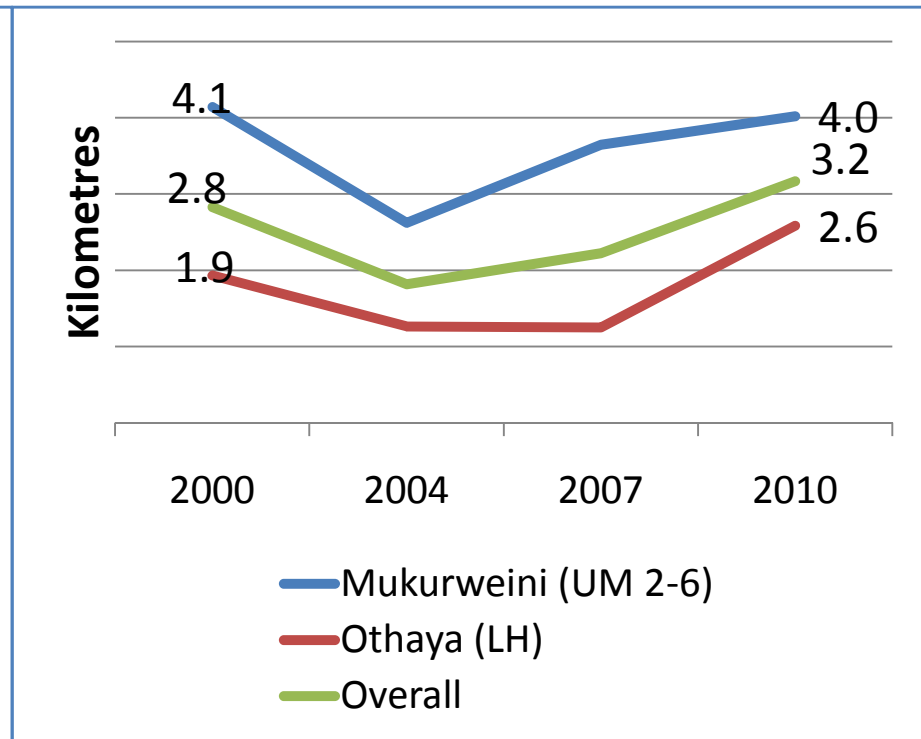


- Fertilizer nearer to farm household compared with certified seed
- Distance to fertiliser seller decreased in Mukuruweini but remained the same in Othaya
- No change in distance to seed seller

Distance to nearest extension services

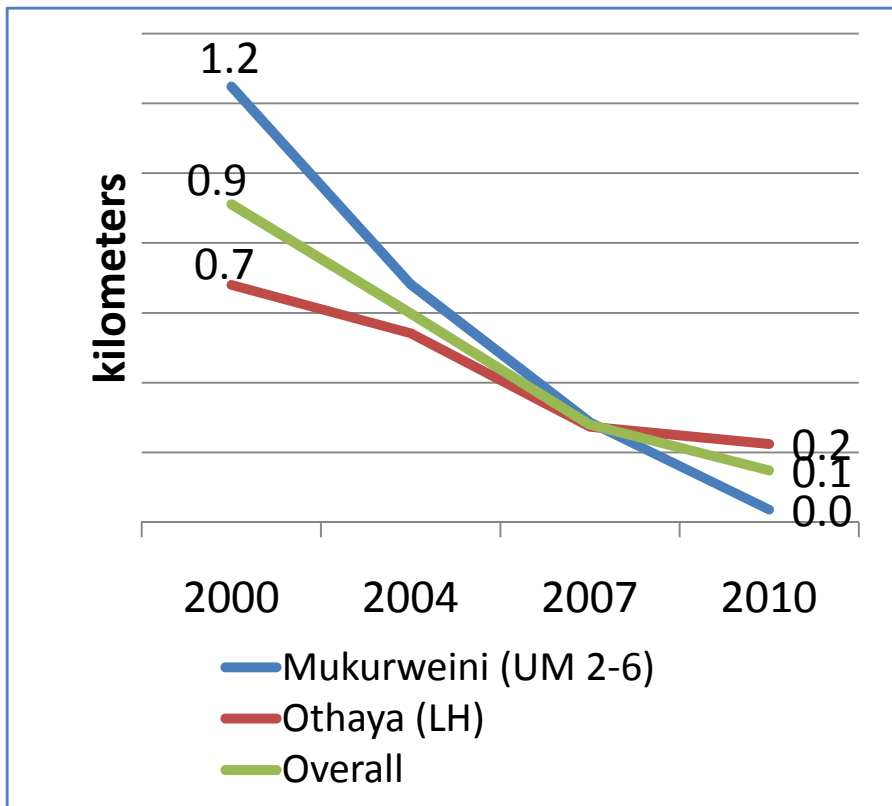


Distance to nearest veterinary services

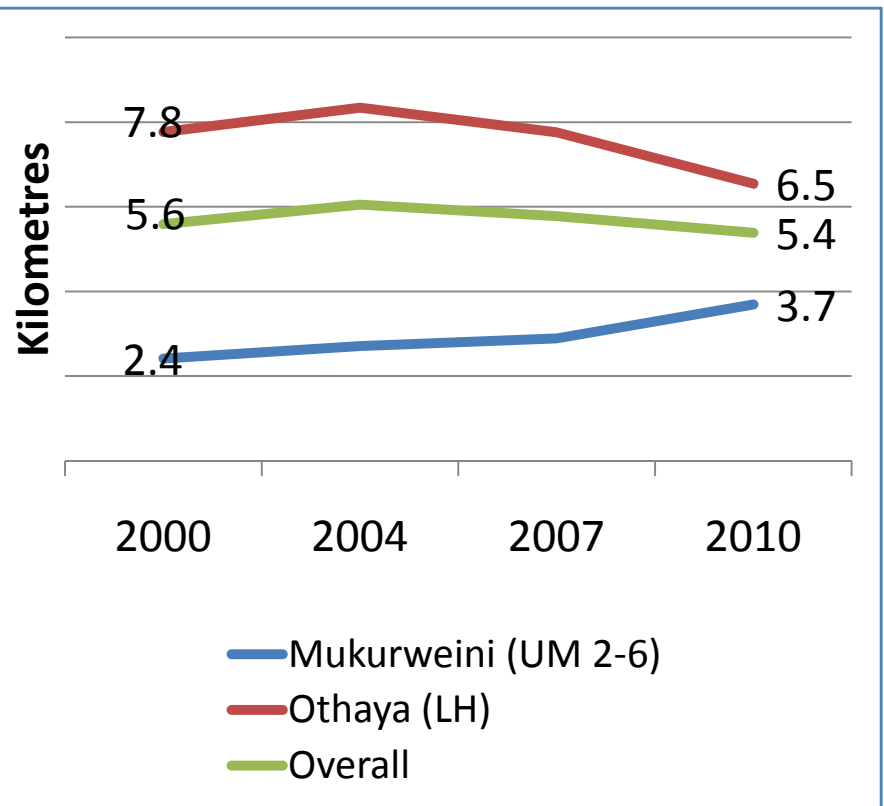


- Households in Mukuruweini travel further for veterinary services
- Distance to extension & veterinary service declined in Mukuruweini but increased slightly in Othaya

Distance to nearest Motorable road

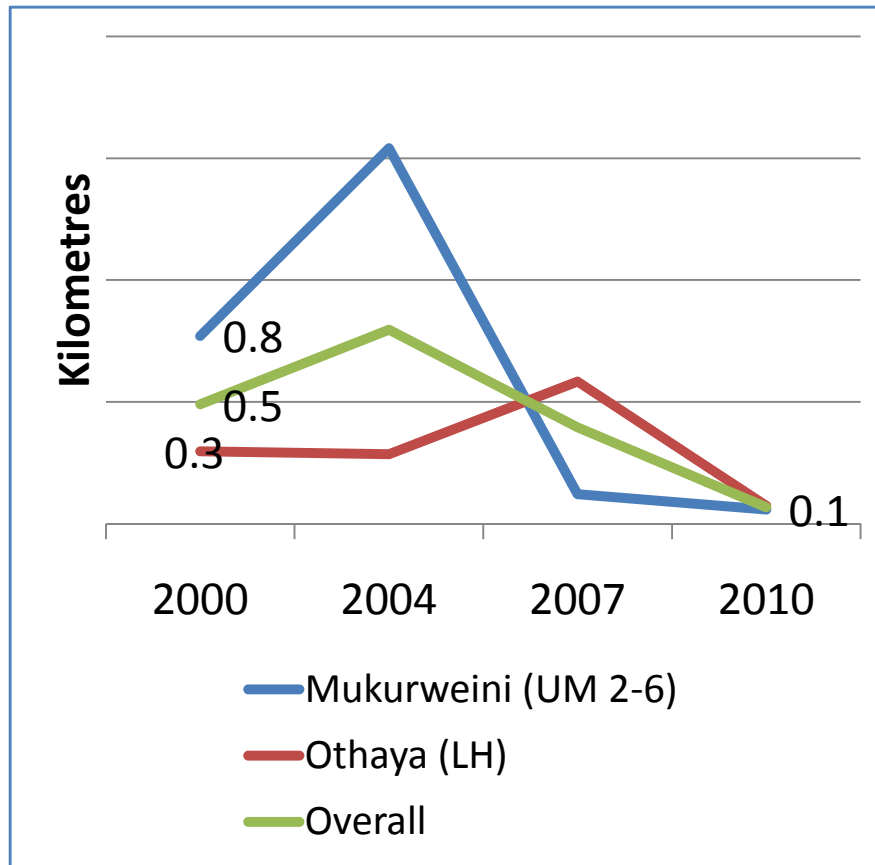


Distance to nearest Tarmac road

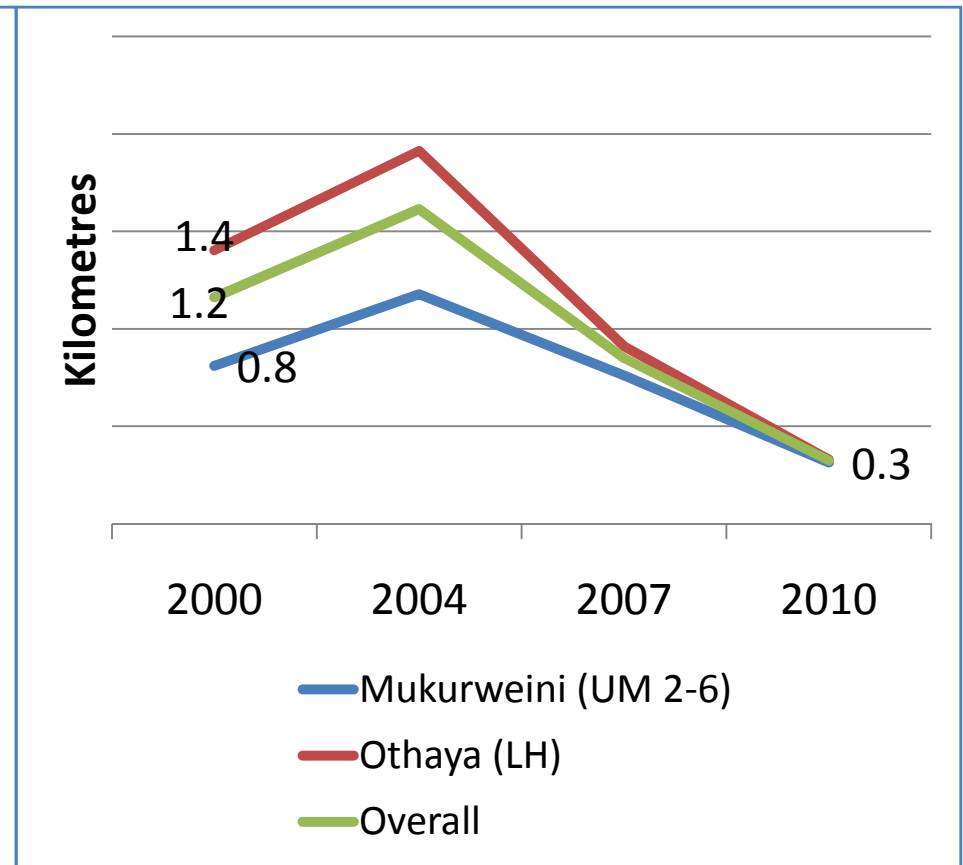


- Motorable roads at or very near farm-gate in both Mukuiruweini & Othaya
- Distance to tarmac road increased in Mukuruweini BUT declined in Othaya

Distance to nearest piped water

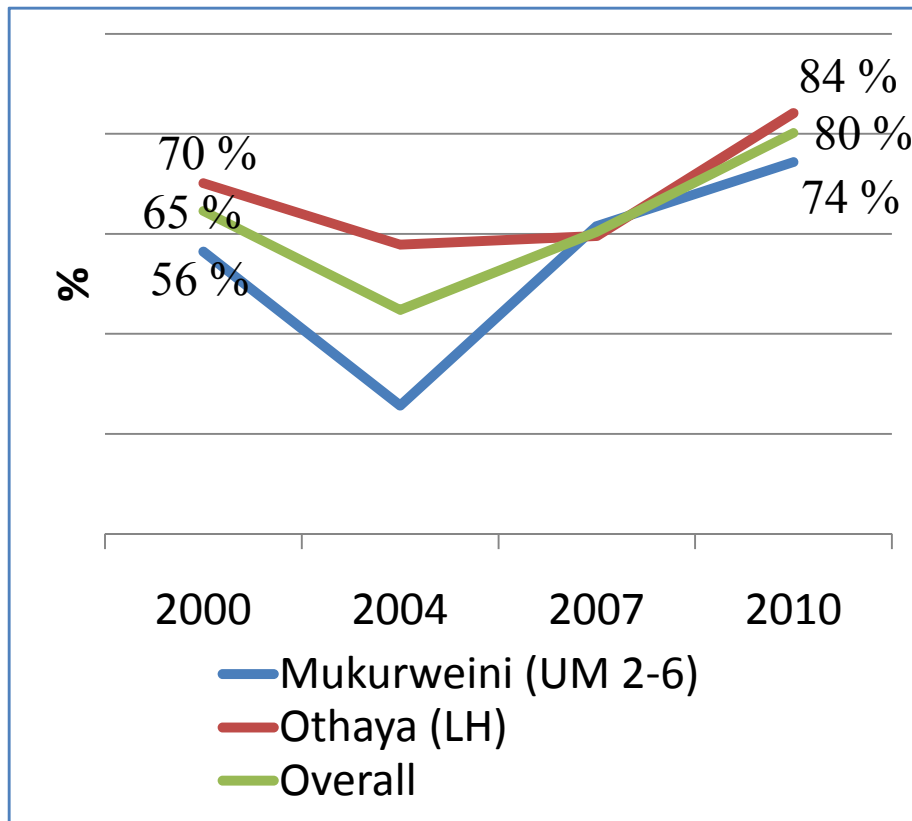


Distance to nearest electricity

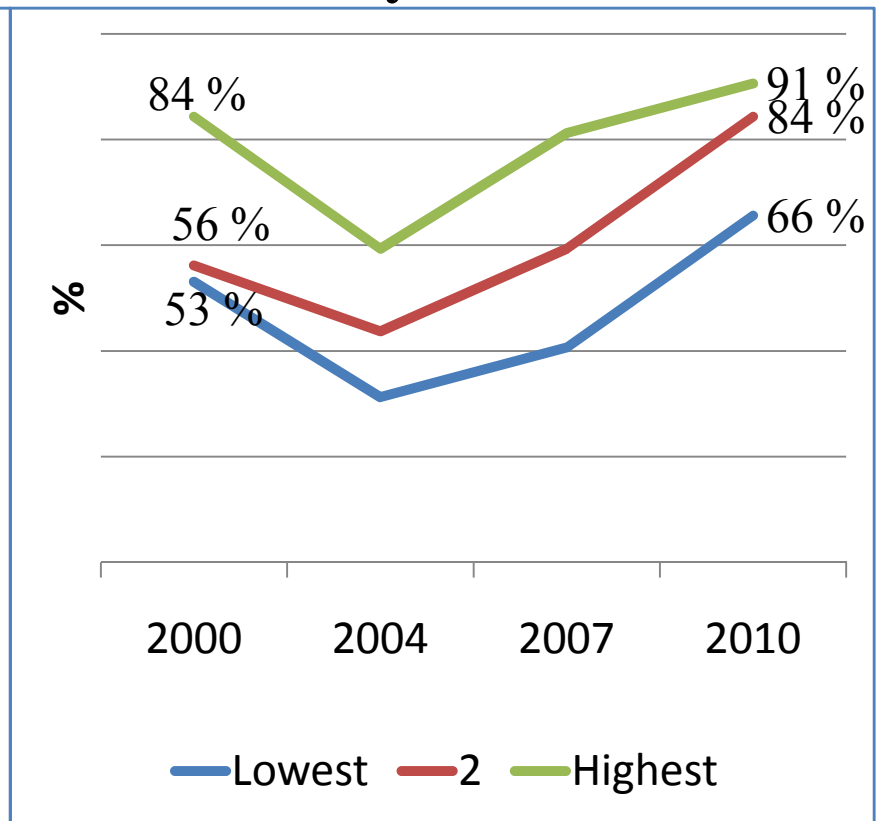


- Piped water now at or very near farm-gate in both
- Distance to electricity declined and now very near farm-gate in both

% of households with piped water - by Region

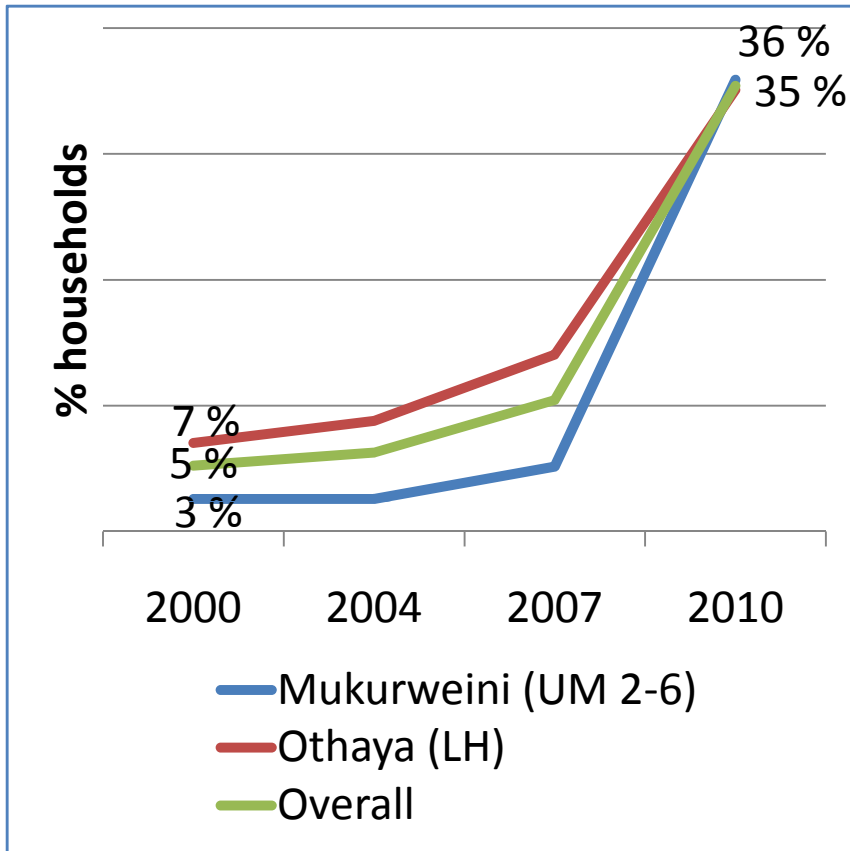


% of households with piped water - by Income level

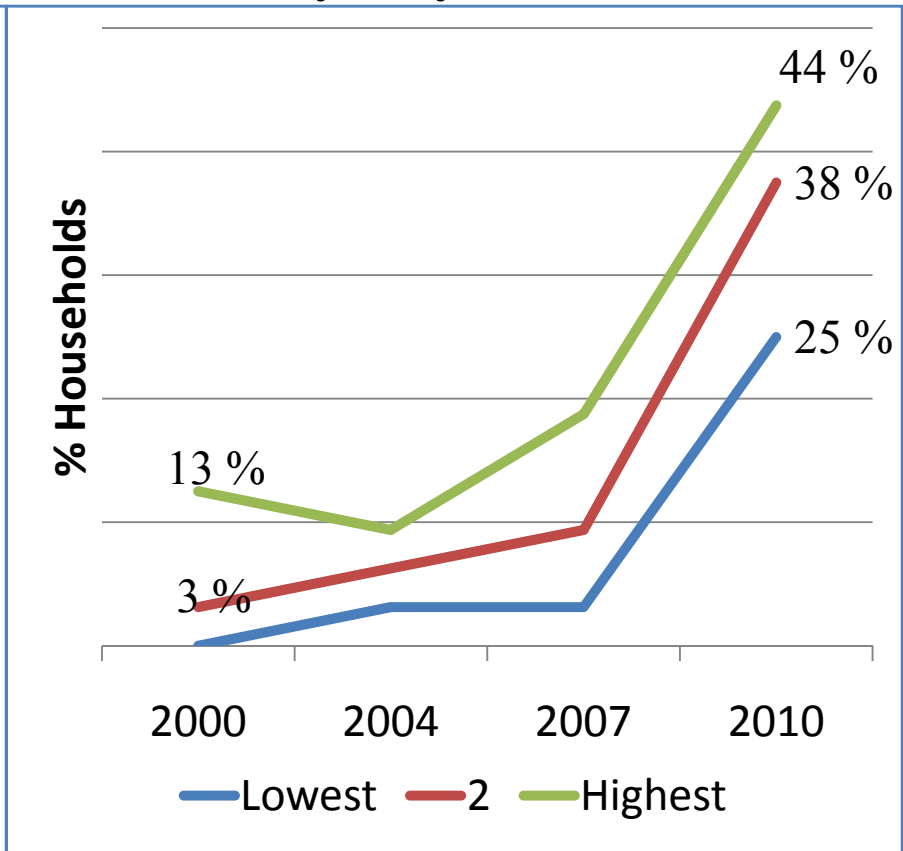


- % of HHs with piped water increased by 14 to 18 percentage points; highest in Othaya
- % of HH with piped water increased for all income groups. The increase higher for higher income groups

% of households with electricity - by Region



% of households with electricity - by Income Level



- Coverage of households similar in both regions BUT differences in income groups (lower for low income group)
- Big increase in proportion of HH with electricity in both Othaya & Mukuruweini BUT the increase lower for low income group



Thank you
